



Edmonton Alberta

\$399,900

This charming & well-maintained semi-bungalow is the perfect opportunity for homeowners & investors alike! Built in 1949, this character home offers both charm & modern updates, making it ideal for immediate occupancy or strong rental potential. Discover a spacious & functional layout featuring 2 large bedrooms upstairs & a main floor boasting a bright & expansive living room on one side & an open-concept dining & kitchen area on the other. The basement is finished with a spacious rec room, a 3rd bedroom, a 3 piece bath & designated laundry room. Some Features include, a newer Metal roof, newer front steps, vinyl windows a massive fully fenced yard. Steps from NAIT, KINGSWAY Mall & Royal Alexandra hospital. Located down the street from the Alberta Aviation Museum & Superstore. DOWNTOWN is a 10 min drive with easy access to public transit as well as short distance to the KINGSWAY/ROYAL ALEX LRT station. (id:6769)

Bedroom 3 3.02 m X 3.06 m

Recreation room 6.7 m X 3.85 m

Living room 7.11 m X 3.96 m

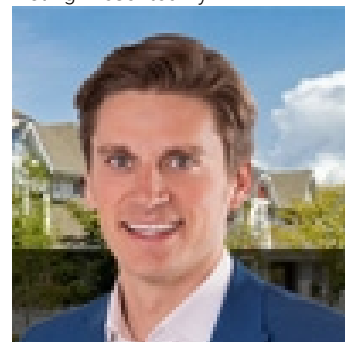
Dining room 2.22 m X 3.34 m

Kitchen 4.88 m X 3.34 m

Primary Bedroom 4.66 m X 4.67 m

Bedroom 2 4.66 m X 4.17 m

Listing Presented By:



Originally Listed by:
RE/MAX Elite

<http://www.ynottony.ca/>



Royal

Le Page Noralta Spruce Grove

#230, 70 Mcleod Ave , Spruce Grove, AB,

Phone: 780-920-0550

Fax:

tyson@royallepage.ca

The property information on this website is derived from the Canadian Real Estate Association's Data Distribution Facility (DDF®). DDF® references real estate listings held by various brokerage firms and franchisees. The accuracy of information is not guaranteed and should be independently verified. The trademarks REALTOR®, REALTORS® and the REALTOR® logo are controlled by The Canadian Real Estate Association (CREA) and identify real estate professionals who are members of CREA. The trademarks MLS®, Multiple Listing Service® and the associated logos are owned by CREA and identify the quality of services provided by real estate professionals who are members of CREA.