



Leduc Alberta

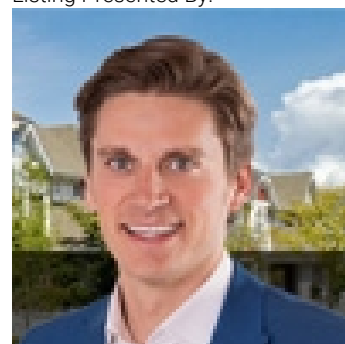
\$335,000

This 3-bedroom, 2-bathroom home offers a functional layout and great potential. The main floor features an open floor plan with a large kitchen offering ample counter and cupboard space, a dining nook with direct access to the backyard, and a convenient 2-piece bathroom, making this level ideal for everyday living and entertaining. The basement is finished and includes a recreation room, along with a huge utility and storage room. A rough-in for a future bathroom provides flexibility for additional development. Upstairs, you'll find three good-sized bedrooms and a full 4-piece bathroom. This home is a great option for a first-time buyer looking to build sweat equity over time. With back-alley access and a good-sized backyard, there is room to enjoy outdoor space or future improvements. Conveniently located close to schools, walking paths, and playgrounds, this property is well suited for families or buyers looking for a home with room to grow. (id:6769)

Family room 6.02 m X 5.19 m
Living room 3.61 m X 3.91 m
Dining room 2.45 m X 3.74 m
Kitchen 3.21 m X 4.09 m

Primary Bedroom 4.1 m X 3.26 m
Bedroom 2 3.59 m X 3.03 m
Bedroom 3 2.73 m X 3.73 m

Listing Presented By:



Originally Listed by:
RE/MAX Elite

<http://sarahlizze.ca/>



Royal

Le Page Noralta Spruce Grove

#230, 70 Mcleod Ave , Spruce Grove, AB,

Phone: 780-920-0550
Fax:
tyson@royallepage.ca

The property information on this website is derived from the Canadian Real Estate Association's Data Distribution Facility (DDF®). DDF® references real estate listings held by various brokerage firms and franchisees. The accuracy of information is not guaranteed and should be independently verified. The trademarks REALTOR®, REALTORS® and the REALTOR® logo are controlled by The Canadian Real Estate Association (CREA) and identify real estate professionals who are members of CREA. The trademarks MLS®, Multiple Listing Service® and the associated logos are owned by CREA and identify the quality of services provided by real estate professionals who are members of CREA.