



Spruce Grove Alberta

\$459,000

At 1880SqFt this is a big home and backing onto a walking path with no direct rear neighbors and within walking distance to three schools, this luxurious 3-bedroom duplex is a rare find. Inside, you'll find over 28 feet of counter and cabinet space, a full walk-in pantry, and an enormous kitchen that flows seamlessly into the spacious great room. The open glass staircase adds a modern touch, while the vaulted bonus room and oversized walk-in closets offer both style and function. Notable upgrades include: quartz countertops in the kitchen and bathrooms with upgraded undermount sinks, luxury vinyl flooring, gas stove, keyless entry, ceiling-height cabinetry, custom solid core doors, framed bathroom mirrors, upgraded subway tile backsplash, premium lighting fixtures, enhanced overhead garage door with windows, and stainless steel OTR microwave and dishwasher, HRV unit and Nat Gas BBQ hookups. Great home in Great Condition. (id:6769)

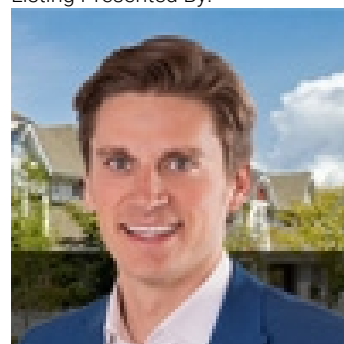
Primary Bedroom Measurements not available

Bedroom 2 Measurements not available

Bedroom 3 Measurements not available

Bonus Room Measurements not available

Listing Presented By:



Originally Listed by:
Royal LePage Noralta Real Estate

<https://tysonmoroz.com/>



Royal

Le Page Noralta Spruce Grove

#230, 70 Mcleod Ave , Spruce Grove, AB,

Phone: 780-920-0550

Fax:

tyson@royallepage.ca

The property information on this website is derived from the Canadian Real Estate Association's Data Distribution Facility (DDF®). DDF® references real estate listings held by various brokerage firms and franchisees. The accuracy of information is not guaranteed and should be independently verified. The trademarks REALTOR®, REALTORS® and the REALTOR® logo are controlled by The Canadian Real Estate Association (CREA) and identify real estate professionals who are members of CREA. The trademarks MLS®, Multiple Listing Service® and the associated logos are owned by CREA and identify the quality of services provided by real estate professionals who are members of CREA.