



Edmonton Alberta

\$539,000

Welcome to this well maintained 2 story home, ideally situated in the quiet yet convenient Carter Crest community of Riverbend. Schools, recreation center and shopping are just a short walk away. Recent upgrades includes quartz counter tops throughout the whole house, newer fridge and hot water tank. The home also offer a stamp concrete patio in the backyard surrounded by mature trees. Vaulted ceiling at the front entrance way and a very generous ensuite with a large walk-in closet. A wonderful place to call home for the whole family. (id:6769)

Living room 4 m X 4.78 m

Dining room 3.81 m X 2.89 m

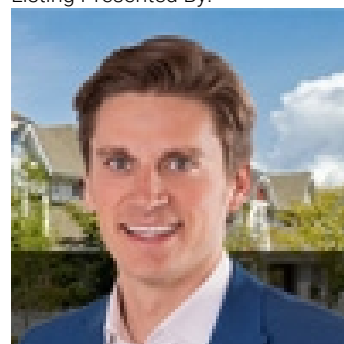
Kitchen 3.89 m X 3.65 m

Primary Bedroom 4.41 m X 3.64 m

Bedroom 2 3.36 m X 2.96 m

Bedroom 3 2.95 m X 2.96 m

Listing Presented By:



Originally Listed by:
RE/MAX Elite

<https://wilsonlamsells.com/>



Royal

Le Page Noralta Spruce Grove

#230, 70 Mcleod Ave , Spruce Grove, AB,

Phone: 780-920-0550

Fax:

tyson@royallepage.ca

The property information on this website is derived from the Canadian Real Estate Association's Data Distribution Facility (DDF®). DDF® references real estate listings held by various brokerage firms and franchisees. The accuracy of information is not guaranteed and should be independently verified. The trademarks REALTOR®, REALTORS® and the REALTOR® logo are controlled by The Canadian Real Estate Association (CREA) and identify real estate professionals who are members of CREA. The trademarks MLS®, Multiple Listing Service® and the associated logos are owned by CREA and identify the quality of services provided by real estate professionals who are members of CREA.