



Edmonton Alberta

\$169,900

Welcome to The Ion in Ambleside, a sought-after condo community in SW Edmonton, surrounded by scenic parks, trails, the vibrant Currents Shopping Centre, and Windermere's top-tier amenities and shops. Beautifully upgraded with brand-new quartz countertops in the kitchen, bathroom, and built-in office area (just days old), new vinyl plank flooring, fresh paint, a new stove and microwave (under two years old) in the spacious kitchen, plus a new Electrolux washer & dryer too! As a ground-floor unit, enjoy the ease of direct access--no waiting for elevators, just step right in and out. Building #2588 is the newest of the three, and these units are a rare find, reflecting the satisfaction of those who call it home. An added perk? The guest suite is right next door, making visits from friends and family extra convenient & no neighbor the majority of the time. 9ft ceilings, south facing, pet-friendly, gym, social room, picnic gazebo, and a gas line for your BBQ. Welcome to one of Edmonton's best neighborhoods! (id:6769)

Living room Measurements not available

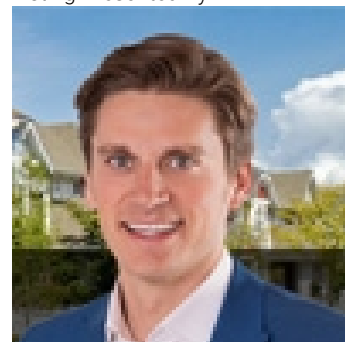
Dining room Measurements not available

Kitchen Measurements not available

Primary Bedroom Measurements not available

Laundry room Measurements not available

Listing Presented By:



Originally Listed by:
RE/MAX Elite

<http://www.jolenelangelo.com/>



Royal

Le Page Noralta Spruce Grove

#230, 70 Mcleod Ave , Spruce
Grove, AB,

Phone: 780-920-0550

Fax:

tyson@royallepage.ca

The property information on this website is derived from the Canadian Real Estate Association's Data Distribution Facility (DDF®). DDF® references real estate listings held by various brokerage firms and franchisees. The accuracy of information is not guaranteed and should be independently verified. The trademarks REALTOR®, REALTORS® and the REALTOR® logo are controlled by The Canadian Real Estate Association (CREA) and identify real estate professionals who are members of CREA. The trademarks MLS®, Multiple Listing Service® and the associated logos are owned by CREA and identify the quality of services provided by real estate professionals who are members of CREA.