



Edmonton Alberta

\$275,000

LARGE 1164 SF 2 BEDROOM PLUS DEN CORNER UNIT in the desirable Rutherford Gate complex! This unit is the largest in the complex and is very private. The building has a fitness center, rentable guest suite and social room, titled UNDERGROUND PARKING STALL with storage cage. The unit lets in tons of natural light, is very spacious, and has a HUGE SW PRIVATE WRAP AROUND BALCONY with gas hookup. The suite has modern maple cabinets, stainless steel appliances, gas fireplace and upgraded window coverings. Located within walking distance to the new CAPITAL LINE SOUTH LRT STATION that has been approved to be built in the near future, close to many shops, grocery stores and easy access to the airport and UofA. (id:6769)

Living room 3.6 m X 4.4 m

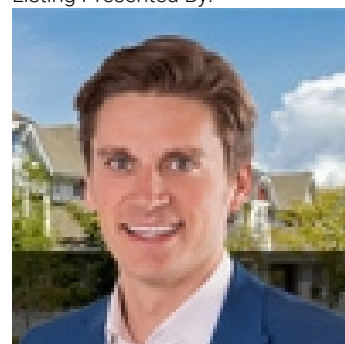
Dining room 2.5 m X 4.5 m

Kitchen 3.1 m X 3 m

Primary Bedroom 4 m X 3.4 m

Bedroom 2 3.4 m X 3.2 m

Listing Presented By:



Originally Listed by:
RE/MAX Elite



Royal

Le Page Noralta Spruce Grove

#230, 70 Mcleod Ave, Spruce Grove, AB,

Phone: 780-920-0550

Fax:

tyson@royallepage.ca

The property information on this website is derived from the Canadian Real Estate Association's Data Distribution Facility (DDF®). DDF® references real estate listings held by various brokerage firms and franchisees. The accuracy of information is not guaranteed and should be independently verified. The trademarks REALTOR®, REALTORS® and the REALTOR® logo are controlled by The Canadian Real Estate Association (CREA) and identify real estate professionals who are members of CREA. The trademarks MLS®, Multiple Listing Service® and the associated logos are owned by CREA and identify the quality of services provided by real estate professionals who are members of CREA.