

## Edmonton Alberta

\$108,800

Why rent when you can own in Riverbend? This one bedroom plus den has plenty of room for furniture and your belongings. Unique floor plan is different from the usual design, allowing personal customization. Decent size living room with adjacent den. White cabinets in kitchen plus 3 included appliances. Patio doors off the living room lead to ground level patio area with west exposure. Bedroom is sizable able to accommodate a king size bed if needed. The 4 piece bathroom has been upgraded over the years. Vinyl plank flooring throughout. Some of the pictures shown have been virtually staged to show you what your new place can look like! Quick possession available. A few blocks away from the river valley, trails, and the Fort Edmonton Footbridge. Easy access to University of Alberta, hospitals & West Edmonton Mall by Transit or Car. Pet Friendly Building! (id:6769)

Living room 5.4 m X 3.4 m

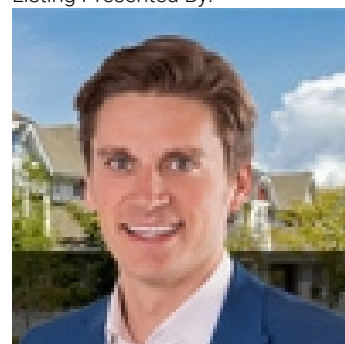
Dining room Measurements not available

Kitchen 4.5 m X 3.2 m

Den 2.6 m X 2.5 m

Primary Bedroom 3.9 m X 3.3 m

Listing Presented By:



Originally Listed by:  
RE/MAX Elite

<http://www.calldale4asale.com/>



**Royal**

**Le Page Noralta Spruce Grove**

#230, 70 Mcleod Ave , Spruce  
Grove, AB,

Phone: 780-920-0550

Fax:

tyson@royalpage.ca

The property information on this website is derived from the Canadian Real Estate Association's Data Distribution Facility (DDF®). DDF® references real estate listings held by various brokerage firms and franchisees. The accuracy of information is not guaranteed and should be independently verified. The trademarks REALTOR®, REALTORS® and the REALTOR® logo are controlled by The Canadian Real Estate Association (CREA) and identify real estate professionals who are members of CREA. The trademarks MLS®, Multiple Listing Service® and the associated logos are owned by CREA and identify the quality of services provided by real estate professionals who are members of CREA.