



Edmonton Alberta

\$312,000

FANTASTIC, ADULT LIVING BUILDING! SPECTACULAR RAVINE LOCATION! IMMACULATE EXECUTIVE CONDO! The Conservatory is one of the cleanest and best-maintained buildings you will find. Located adjacent to Mill Creek Ravine surrounded by scenic walking trails & park, close to downtown, U of A & future LRT station. This large 1 bdrm + den unit boasts a bright, open & functional floor plan with large living spaces. Features include the spacious kitchen with loads of cabinets, powered island, corner pantry & S/S appliances, spacious master with his and her closets & 4-pce ensuite, in-suite laundry & storage, large south-facing patio, A/C & NEW PAINT AND CARPET. The underground parking stall is near the elevator & there is a storage cage in a separate locked room. This unit is very close to the elevator and a ground-level exit steps from the front door providing an additional element of convenience. Outstanding amenities, including a roof-top patio, guest suite, exercise room and beautiful lobby. (id:6769)

Living room 4.03 m X 4.58 m

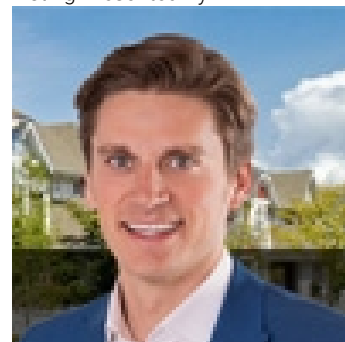
Dining room 4.03 m X 2.88 m

Kitchen 3.85 m X 3.63 m

Den 2.74 m X 2.67 m

Primary Bedroom 3.45 m X 5.38 m

Listing Presented By:



Originally Listed by:
RE/MAX Elite



CREA

DDF

#230, 70 Mcleod Ave , Spruce Grove, AB,

Phone: 780-920-0550
tyson@royallepage.ca

The property information on this website is derived from the Canadian Real Estate Association's Data Distribution Facility (DDF®). DDF® references real estate listings held by various brokerage firms and franchisees. The accuracy of information is not guaranteed and should be independently verified. The trademarks REALTOR®, REALTORS® and the REALTOR® logo are controlled by The Canadian Real Estate Association (CREA) and identify real estate professionals who are members of CREA. The trademarks MLS®, Multiple Listing Service® and the associated logos are owned by CREA and identify the quality of services provided by real estate professionals who are members of CREA.