



Edmonton Alberta

\$430,000

WELL, WELL, WELL! Well-located, well-built, and well-maintained home in desirable DOVERCOURT. Offering four bedrooms and two bathrooms, this home features a functional, well-designed floor plan ideal for families or investors alike. Recent upgrades include a beautifully renovated kitchen and bathrooms, freshly painted throughout, vinyl windows, a newer furnace and hot water tank, CENTRAL AIR CONDITIONING, upgraded plumbing and electrical, newer shingles, fascia, and siding w/insulation, as well as a recently installed sump pump and weeping tile. The property sits on a 6,500+ sq ft lot that has been tastefully landscaped, complete with newer walkways and a front driveway, in addition to an OVERSIZED DOUBLE DETACHED GARAGE. Conveniently located near schools and playgrounds, with easy access to downtown, Yellowhead Trail, and St. Albert Trail, this home offers excellent connectivity to all amenities. An outstanding opportunity in a sought-after location, MAKE YOUR MOVE TODAY! (id:6769)

Family room 4.53 m X 3.77 m

Bedroom 3 2.97 m X 3.08 m

Bedroom 4 2.97 m X 3.06 m

Living room 3.42 m X 6.93 m

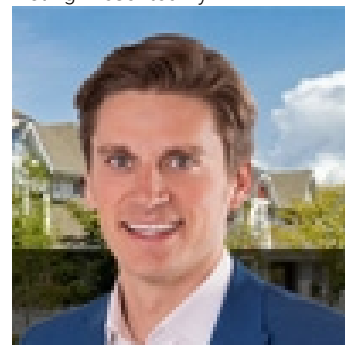
Dining room 2.13 m X 3.17 m

Kitchen 3.14 m X 3.45 m

Primary Bedroom 3.14 m X 3.49 m

Bedroom 2 3.14 m X 2.52 m

Listing Presented By:



Originally Listed by:
RE/MAX Elite

<http://www.jennynarine.ca/>



Royal

Le Page Noralta Spruce Grove

#230, 70 Mcleod Ave , Spruce
Grove, AB,

Phone: 780-920-0550

Fax:

tyson@royallepage.ca

The property information on this website is derived from the Canadian Real Estate Association's Data Distribution Facility (DDF®). DDF® references real estate listings held by various brokerage firms and franchisees. The accuracy of information is not guaranteed and should be independently verified. The trademarks REALTOR®, REALTORS® and the REALTOR® logo are controlled by The Canadian Real Estate Association (CREA) and identify real estate professionals who are members of CREA. The trademarks MLS®, Multiple Listing Service® and the associated logos are owned by CREA and identify the quality of services provided by real estate professionals who are members of CREA.