



Rural Leduc County Alberta

\$850,000

MASSIVE EXECUTIVE BUNGALOW! WALKOUT BASEMENT! TONS OF POTENTIAL! This 2881 sq ft 3 bed, 3 bath OVERSIZED TRIPLE GARAGE estate property on 3.88 acres screams value, & is ideal for those looking to build equity / develop your dream acreage! Large mudroom w/ laundry leads to your open concept main floor living space complete with hardwood & tile throughout, uniting the area & allowing for ample sunlight throughout. Massive kitchen w/ huge island & plenty of cabinets; walk-in pantry & access to covered patio. Soaring A-Frame design w/ gas fireplace creates the picture perfect living room space. Two bedrooms on the main, including the massive primary bed w/ 5 pce ensuite, walk-in closet, & den / office w/ access to the yard. The WALKOUT basement is partially finished, with another huge bedroom / den, 4 pce bath. Configure your own plan w/ a few more bedrooms, spacious rec room, or complete it with your second kitchen. Cold storage quonset for the toys or RV. Bussing to Blackgold School Division; a must see! (id:6769)

Bedroom 3 8.07 m X 4.93 m

Living room 5.09 m X 8.22 m

Dining room 6.99 m X 4.1 m

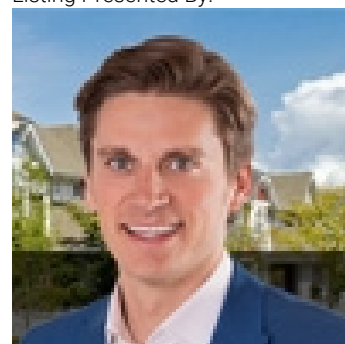
Kitchen 8.31 m X 7.54 m

Den 4.55 m X 3.53 m

Primary Bedroom 4.64 m X 6.6 m

Bedroom 2 3.85 m X 4.9 m

Listing Presented By:



Originally Listed by:
RE/MAX Elite

<http://kevindoyle.remax.ca/>



CREA

DDF

#230, 70 Mcleod Ave , Spruce
Grove, AB,

Phone: 780-920-0550
tyson@royallepage.ca

The property information on this website is derived from the Canadian Real Estate Association's Data Distribution Facility (DDF®). DDF® references real estate listings held by various brokerage firms and franchisees. The accuracy of information is not guaranteed and should be independently verified. The trademarks REALTOR®, REALTORS® and the REALTOR® logo are controlled by The Canadian Real Estate Association (CREA) and identify real estate professionals who are members of CREA. The trademarks MLS®, Multiple Listing Service® and the associated logos are owned by CREA and identify the quality of services provided by real estate professionals who are members of CREA.