



Edmonton Alberta

\$199,000

CORNER UNIT * 2 BED / 2 BATH CONDO * OPEN CONCEPT * IN-SUITE LAUNDRY * LARGE BALCONY *

Imagine you and your family in this beautiful second floor corner unit condo. It's south facing which will ensure lots of sunlight and there are no other buildings blocking your view. The Primary suite has a generously sized bedroom, an ensuite bathroom and walk-through closet. The in-suite laundry room has additional storage. There is a large balcony with room for your barbecue. The interior is freshly and professionally painted. The kitchen boasts dark cherry cabinets and has a breakfast bar. The building itself is pet friendly and there is a gym, a social room and a guest suite available for rent as well. The unit looks out over your own parking energized parking stall. It's very close to Anthony Henday access and to shopping as the Rabbit Hill Shopping Centre and Currents of Windermere are nearby as is the Terwilligar Rec Centre. The airport is close by too. Don't miss this opportunity to own this well priced condo! (id:6769)

Living room 6.28 m X 4.6 m

Dining room Measurements not available

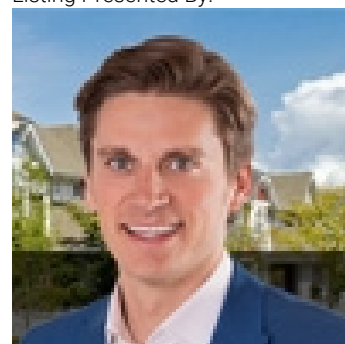
Kitchen 3.52 m X 4.95 m

Primary Bedroom 5.93 m X 4.09 m

Bedroom 2 2.88 m X 3.93 m

Laundry room 2.88 m X 2.36 m

Listing Presented By:



Originally Listed by:
RE/MAX Elite

<https://hermanhelps.ca/>



CREA

DDF

#230, 70 Mcleod Ave , Spruce
Grove, AB,

Phone: 780-920-0550
tyson@royallepage.ca

The property information on this website is derived from the Canadian Real Estate Association's Data Distribution Facility (DDF®). DDF® references real estate listings held by various brokerage firms and franchisees. The accuracy of information is not guaranteed and should be independently verified. The trademarks REALTOR®, REALTORS® and the REALTOR® logo are controlled by The Canadian Real Estate Association (CREA) and identify real estate professionals who are members of CREA. The trademarks MLS®, Multiple Listing Service® and the associated logos are owned by CREA and identify the quality of services provided by real estate professionals who are members of CREA.