



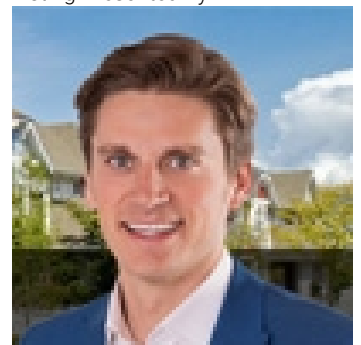
Edmonton Alberta

\$369,900

Located on a quiet street in Elmwood Park, 850 sqft Bungalow with 3 bedrooms and 1 bathroom on the main floor. Situated on a huge corner lot, 69.5 X 150 Feet. (id:6769)

Primary Bedroom Measurements not available

Listing Presented By:



Originally Listed by:
RE/MAX Elite

<http://www.ynottony.ca/>



CREA

DDF

#230, 70 Mcleod Ave , Spruce
Grove, AB,

Phone: 780-920-0550
tyson@royallepage.ca

The property information on this website is derived from the Canadian Real Estate Association's Data Distribution Facility (DDF®). DDF® references real estate listings held by various brokerage firms and franchisees. The accuracy of information is not guaranteed and should be independently verified. The trademarks REALTOR®, REALTORS® and the REALTOR® logo are controlled by The Canadian Real Estate Association (CREA) and identify real estate professionals who are members of CREA. The trademarks MLS®, Multiple Listing Service® and the associated logos are owned by CREA and identify the quality of services provided by real estate professionals who are members of CREA.