



Edmonton Alberta

\$999,000

CASH GRABBING INVESTMENT OPPORTUNITY!! EXISTING 4PLEX WITH REZONING PERMITS!!! PRIME LOCATION FACING THE RIVER!! This 4Plex is in great shape and a great investment opportunity. Each unit offers 800 to 1000+ SQFT, 3 bedroom units above grade and 2 bedroom units bellow, spacious living & dining room, kitchen, 1 baths, shared laundry and low utility costs. LOT SIZE OVER 10,700 SQFT it has also been rezoned to allow a total of 14 units (mix of townhomes, basement suites and garage suites. DPs approved and BPs are almost ready to be issued. Located on a quiet street, the possibilities are endless with this CASH grabbing 4Plex. Surrounded by Edmontons beautiful river valley, close to Schools, Playgrounds, public transportation and countless amenities. This property will not be around for long so come check it out! (id:6769)

Living room 4.68 m X 4.35 m

Kitchen 3.63 m X 3.38 m

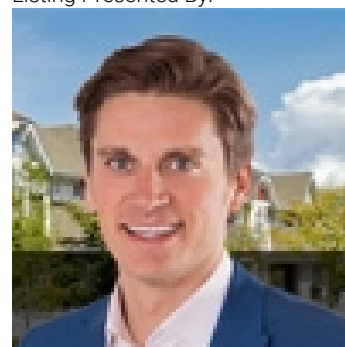
Primary Bedroom 3.95 m X 3.44 m

Bedroom 2 3.64 m X 2.78 m

Bedroom 3 3.63 m X 2.81 m

Storage 1.09 m X 2.57 m

Listing Presented By:



Originally Listed by:
Century 21 All Stars Realty Ltd

<http://www.michaelsells.ca/>



CREA

DDF

#230, 70 Mcleod Ave , Spruce Grove, AB,

Phone: 780-920-0550
tyson@royallepage.ca

The property information on this website is derived from the Canadian Real Estate Association's Data Distribution Facility (DDF®). DDF® references real estate listings held by various brokerage firms and franchisees. The accuracy of information is not guaranteed and should be independently verified. The trademarks REALTOR®, REALTORS® and the REALTOR® logo are controlled by The Canadian Real Estate Association (CREA) and identify real estate professionals who are members of CREA. The trademarks MLS®, Multiple Listing Service® and the associated logos are owned by CREA and identify the quality of services provided by real estate professionals who are members of CREA.