



Edmonton Alberta

\$727,000

Remarkable home being first time on the market. Steps away from the ravine & walking trails of Whitemud Creek. This home has been well looked after and has numerous recent upgrades. Some of them include new garage (2008), newer metal roof (2017), newer windows (2003), furnaces (2006) just to name a few. The bright, spacious living room has 2 large south facing windows. The dining space is just off of the kitchen area which also has room for a kitchen table & chairs. Also on the main floor is a 4 piece bathroom and two good size bedroom including the primary one. In the basement there are two more bedrooms, another 3 piece bathroom, enormous family room and storage/utility room. There is also a back entrance to the basement utility room. The fully fenced yard faces West and North and is just off an alley. There is a newer double detached garage at the back. (id:6769)

Family room 5.98 m X 4.06 m

Bedroom 3 3.9 m X 3.12 m

Bedroom 4 3.86 m X 3.12 m

Utility room 6.72 m X 4.03 m

Living room 6.27 m X 3.6 m

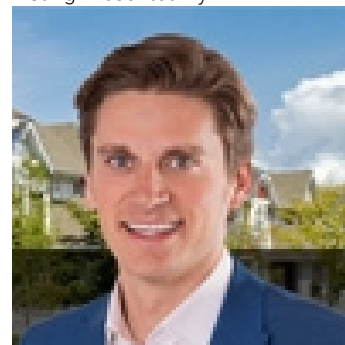
Dining room 3.43 m X 2.54 m

Kitchen 4.52 m X 4.25 m

Primary Bedroom 4.1 m X 3.3 m

Bedroom 2 4.05 m X 3.3 m

Listing Presented By:



Originally Listed by:
RE/MAX Elite

<http://www.wattsells.ca/>



CREA

DDF

#230, 70 Mcleod Ave , Spruce
Grove, AB,

Phone: 780-920-0550
tyson@royallepage.ca

The property information on this website is derived from the Canadian Real Estate Association's Data Distribution Facility (DDF®). DDF® references real estate listings held by various brokerage firms and franchisees. The accuracy of information is not guaranteed and should be independently verified. The trademarks REALTOR®, REALTORS® and the REALTOR® logo are controlled by The Canadian Real Estate Association (CREA) and identify real estate professionals who are members of CREA. The trademarks MLS®, Multiple Listing Service® and the associated logos are owned by CREA and identify the quality of services provided by real estate professionals who are members of CREA.