



Edmonton Alberta

\$309,000

INVESTOR ALERT IN CALDER! Don't miss this 2+1 bedroom HALF DUPLEX BUNGALOW with OVERSIZED SINGLE GARAGE. Large LIVING ROOM/DINING ROOM & a U-shaped kitchen with white appliances. 2 bedrooms & a 4 pc. main bathroom plus a laundry with stacked washer & dryer complete the main level. Fully finished LOWER LEVEL with family room, SECOND KITCHEN, 1 bedroom, a 3 pc. bathroom, laundry room & a SEPERATE ENTRANCE. Upgrades include HIGH EFFICIENCY FURNACE plus a NEWER HOT WATER TANK. LOW MAINTENANCED LANDSCAPED FENCED YARD with planters boxes. PEPECT STARTER or INVESTMENT! (id:6769)

Family room 5.24 m X 4.32 m

Bedroom 3 4.43 m X 3.02 m

Second Kitchen 3.55 m X 2.4 m

Laundry room 2.52 m X 1.72 m

Living room 4.58 m X 4.32 m

Dining room 2.43 m X 2.78 m

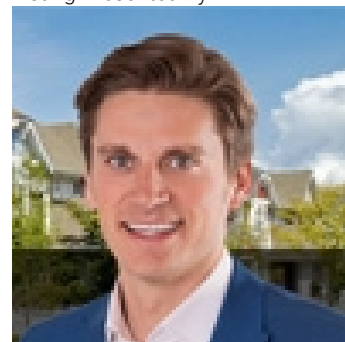
Kitchen 2.71 m X 2.57 m

Primary Bedroom 4.37 m X 2.6 m

Bedroom 2 3.28 m X 2.74 m

Laundry room 1.4 m X 1.71 m

Listing Presented By:



Originally Listed by:
RE/MAX Elite

<https://www.horsepowerranch.com/>



Royal

Le Page Noralta Spruce Grove

#230, 70 Mcleod Ave , Spruce Grove, AB,

Phone: 780-920-0550

Fax:

tyson@royalpage.ca

The property information on this website is derived from the Canadian Real Estate Association's Data Distribution Facility (DDF®). DDF® references real estate listings held by various brokerage firms and franchisees. The accuracy of information is not guaranteed and should be independently verified. The trademarks REALTOR®, REALTORS® and the REALTOR® logo are controlled by The Canadian Real Estate Association (CREA) and identify real estate professionals who are members of CREA. The trademarks MLS®, Multiple Listing Service® and the associated logos are owned by CREA and identify the quality of services provided by real estate professionals who are members of CREA.