



## Edmonton Alberta

\$289,000

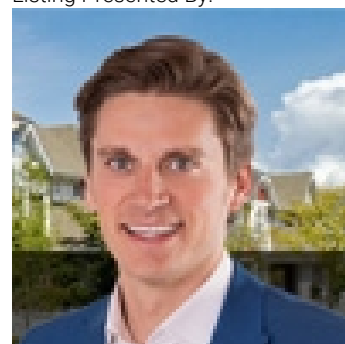
Welcome to Balwin and this well cared for half duplex with single detached garage and INLAW SUITE! Several upgrades over the years including roof, furnace, water tank, flooring. Main floor features spacious front entry, living room with hardwood floors, kitchen and dining area, linen closets, 2 bedrooms and 4 piece bathroom. Basement with SEPARATE SIDE ENTRANCE features, third bedroom, SECOND KITCHEN, living room and dining area, mechanical room, laundry room. Backyard features oversized 14'x21' detached single garage with driveway and attached shed, fully fenced low maintenance yard. Close to all amenities and major roadways. (id:6769)

Bedroom 3 Measurements not available

Bedroom 2 Measurements not available

Primary Bedroom Measurements not available

Listing Presented By:



Originally Listed by:  
RE/MAX Elite

<https://www.sergiosells.ca/>



CREA

DDF

#230, 70 Mcleod Ave , Spruce  
Grove, AB,

Phone: 780-920-0550  
tyson@royallepage.ca

The property information on this website is derived from the Canadian Real Estate Association's Data Distribution Facility (DDF®). DDF® references real estate listings held by various brokerage firms and franchisees. The accuracy of information is not guaranteed and should be independently verified. The trademarks REALTOR®, REALTORS® and the REALTOR® logo are controlled by The Canadian Real Estate Association (CREA) and identify real estate professionals who are members of CREA. The trademarks MLS®, Multiple Listing Service® and the associated logos are owned by CREA and identify the quality of services provided by real estate professionals who are members of CREA.