



# Edmonton Alberta

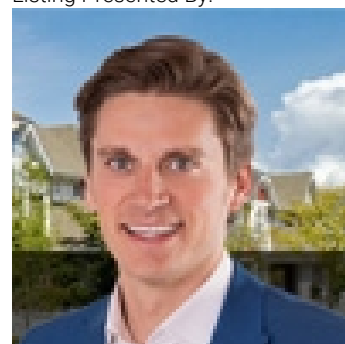
\$1,148,000

Stunning 3231 sq. ft. PLATINUM SIGNATURE HOME with amazing ATTENTION TO DETAIL, located on a spacious corner lot just STEPS TO TRAILS with a perfect sized yard! Enter this open concept CONTEMPORARY 2 STORY great room surrounded by NATURAL LIGHT with a LINEAR FIREPLACE, RICH BLOND HARDWOOD & access to the fabulous DECK with gas & yard with LV LIGHTING! The GLASS ROOM offers unlimited DESIGN CHOICES! 10' CEILINGS throughout the main & a spacious dining room with TRANSOM WINDOWS leads to the ISLAND KITCHEN surrounded by an abundance of MODERN CABINetry, QUARTZ WATERFALL, LUXURY BI APPLIANCES, GAS COOKTOP & BOSCH COFFEE CENTER! A generous WALK IN PANTRY & a perfectly organized MUDROOM are just off of the HEATED GARAGE that features an EV CHARGER & EPOXY FLOORS! The CENTRAL STAIRCASE leads up to a bright BONUS ROOM, 4 generous bedrooms, the 5 pc. MAIN BATH plus the LAUNDRY ROOM. The SUNLIT PRIMARY offers an IMPRESSIVE WI CLOSET & SPA ENSUITE with SHOWER & TUB. AC, POWER BLINDS, WATER FEATURE & BI SONOS, WOW! (id:6769)

Living room 5.4 m X 4.96 m  
 Dining room 5.56 m X 2.86 m  
 Kitchen 5.12 m X 5.97 m  
 Den 3.83 m X 3.83 m  
 Primary Bedroom 3.51 m X 5.07 m

Bedroom 2 5.07 m X 3.79 m  
 Bedroom 3 5.07 m X 3.68 m  
 Bedroom 4 3.63 m X 3.95 m  
 Bonus Room 5.59 m X 3.59 m  
 Laundry room Measurements not available

Listing Presented By:



Originally Listed by:  
 RE/MAX Elite

<http://www.horsepowerranch.com/>



CREA

DDF

#230, 70 Mcleod Ave , Spruce Grove, AB,

Phone: 780-920-0550  
 tyson@royallepage.ca

The property information on this website is derived from the Canadian Real Estate Association's Data Distribution Facility (DDF®). DDF® references real estate listings held by various brokerage firms and franchisees. The accuracy of information is not guaranteed and should be independently verified. The trademarks REALTOR®, REALTORS® and the REALTOR® logo are controlled by The Canadian Real Estate Association (CREA) and identify real estate professionals who are members of CREA. The trademarks MLS®, Multiple Listing Service® and the associated logos are owned by CREA and identify the quality of services provided by real estate professionals who are members of CREA.