



Edmonton Alberta

\$144,900

SPECTACULAR VIEW | RENOVATED KITCHEN | LARGE BALCONY | LAMINATE FLOORING | PET FRIENDLY | STAINLESS STEEL APPLIANCES | UNDERGROUND PARKING | POOL | SOCIAL ROOM | GYM | CONDO FEES INCLUDE ELECTRICITY, HEAT & WATER Experience the pinnacle of condo living in Glenora. Discover a meticulously maintained condo boasting full amenities, underground parking, and a pet-friendly atmosphere. This unit showcases a superb layout featuring a generous bedroom, living room, dining area, and a modernized kitchen. Embrace mornings on the expansive balcony with a freshly brewed coffee, witnessing the sunrise, or unwind in the evening with a cherished glass of red wine to catch the sunset. Benefit from an onsite manager, nighttime security, and inclusive utilities electricity, heat, and water in your condo fees. Indulge in a wealth of amenities: a saltwater pool, fitness center, social room, and sauna, all while being just moments from downtown and the River Valley. This home is a gem waiting to be discovered! (id:6769)

Living room 4.6 m X 5.59 m

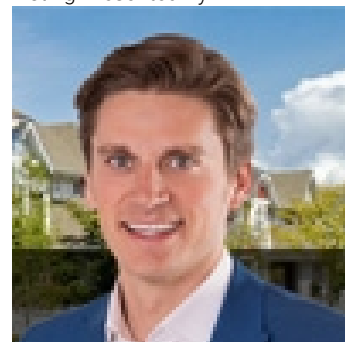
Dining room 2.47 m X 2.37 m

Kitchen 2.49 m X 2.19 m

Primary Bedroom 3.57 m X 4.17 m

Storage 2.54 m X 1.17 m

Listing Presented By:



Originally Listed by:
RE/MAX Elite

<http://erickyip.abmls.mlxchange.com/>



CREA

DDF

#230, 70 Mcleod Ave , Spruce Grove, AB,

Phone: 780-920-0550
tyson@royallepage.ca

The property information on this website is derived from the Canadian Real Estate Association's Data Distribution Facility (DDF®). DDF® references real estate listings held by various brokerage firms and franchisees. The accuracy of information is not guaranteed and should be independently verified. The trademarks REALTOR®, REALTORS® and the REALTOR® logo are controlled by The Canadian Real Estate Association (CREA) and identify real estate professionals who are members of CREA. The trademarks MLS®, Multiple Listing Service® and the associated logos are owned by CREA and identify the quality of services provided by real estate professionals who are members of CREA.