



Edmonton Alberta

\$1,028,800

Stunning Kanvi contemporary 2 sty home located in prestigious Jagare Ridge. Beautifully designed & decorated w/loads of upgrades. Open concept plan w/an abundance of natural lighting- perfect for those who love to entertain large or small gatherings. Over 4000 sf ttl. High ceilings, open tread hardwood stairs w/metal cable railing. Chef's kitchen w/BOSCH S/S appliances, a huge island w/eating bar, quartz counters & W/I pantry. Great rm/ linear FP. Large dining area can expand to accommodate large groups. Big mudrm for the growing family. Gorgeous H/W throughout much of the home. Upper level has a Bonus Rm, 3 large bedrms, laundry rm & 5 pc bathrm. Luxurious primary suite w/a spa like retreat. F/Fin bsmt w/Rec rm, Media rm, 3 pc & a 4/5th bedrm. Convert one to an exercise area. Beautifully landscaped yard w/a multi tiered deck w/a pergola. Add a couple of Choke Cherry trees & you have instant privacy. The home has A/C & an O/S heated garage. Close to eateries, shopping, golf, trails & transit (id:6769)

Family room 3.74 m X 6.04 m

Bedroom 4 4.32 m X 3.26 m

Bedroom 5 2.79 m X 3.46 m

Media 3.95 m X 4.18 m

Living room 5.34 m X 3.61 m

Dining room 5.12 m X 2.47 m

Kitchen 5.65 m X 3.84 m

Primary Bedroom 4.55 m X 4.52 m

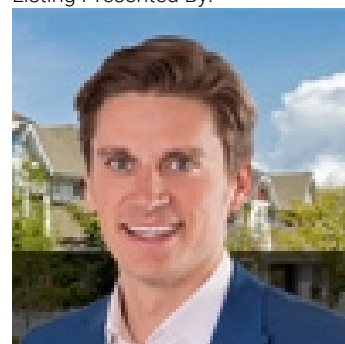
Bedroom 2 3.63 m X 3.75 m

Bedroom 3 3.68 m X 3.95 m

Bonus Room 4.72 m X 5.17 m

Laundry room Measurements not available

Listing Presented By:



Originally Listed by:
RE/MAX Elite

<http://www.alangee.com/>



Royal

Le Page Noralta Spruce Grove

#230, 70 Mcleod Ave , Spruce Grove, AB,

Phone: 780-920-0550

Fax:

tyson@royallepage.ca

The property information on this website is derived from the Canadian Real Estate Association's Data Distribution Facility (DDF®). DDF® references real estate listings held by various brokerage firms and franchisees. The accuracy of information is not guaranteed and should be independently verified. The trademarks REALTOR®, REALTORS® and the REALTOR® logo are controlled by The Canadian Real Estate Association (CREA) and identify real estate professionals who are members of CREA. The trademarks MLS®, Multiple Listing Service® and the associated logos are owned by CREA and identify the quality of services provided by real estate professionals who are members of CREA.