

Edmonton Alberta

\$309,800

Located in the Northside community of Lauderdale, 934 sq. ft. 2+2 Bedrooms bungalow. The main floor has large living room with hardwood flooring. Spacious kitchen with eating area. Two bedrooms and a 4 pcs. bath. The partially finished basement has a recreation room, two bedrooms, 3 pcs. bath, and laundry area. New 2023 furnace, newer hot water tank. Roof has been replaced within the last 10 years. Close to Northgate Mall and quick access to Yellowhead Highway. (id:6769)

Bedroom 3 3.94 m X 3.41 m

Bedroom 4 3.95 m X 3.33 m

Recreation room 3.88 m X 3.24 m

Laundry room 3.13 m X 2.25 m

Storage 2.25 m X 0.9 m

Utility room 3.44 m X 3.42 m

Living room 3.64 m X 3.97 m

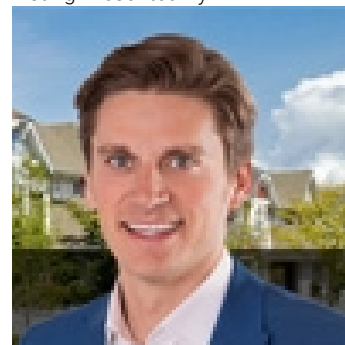
Dining room 3.64 m X 1.9 m

Kitchen 4.15 m X 3.47 m

Primary Bedroom 3.22 m X 3.25 m

Bedroom 2 3.04 m X 3.19 m

Listing Presented By:



Originally Listed by:
RE/MAX River City

<http://www.simonchong.com/>



CREA

DDF

#230, 70 Mcleod Ave , Spruce
Grove, AB,

Phone: 780-920-0550
tyson@royallepage.ca

The property information on this website is derived from the Canadian Real Estate Association's Data Distribution Facility (DDF®). DDF® references real estate listings held by various brokerage firms and franchisees. The accuracy of information is not guaranteed and should be independently verified. The trademarks REALTOR®, REALTORS® and the REALTOR® logo are controlled by The Canadian Real Estate Association (CREA) and identify real estate professionals who are members of CREA. The trademarks MLS®, Multiple Listing Service® and the associated logos are owned by CREA and identify the quality of services provided by real estate professionals who are members of CREA.