

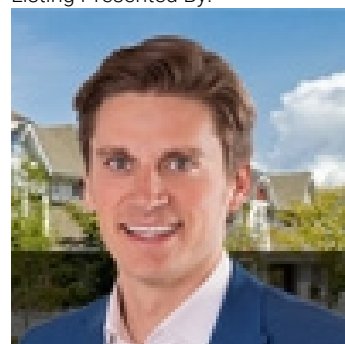


Rural Parkland County Alberta

\$129,000

Don't miss this opportunity to own a ready-to-build 50' x 140' lot in vibrant Seba Beach! Set on a 0.16-acre sloped lot, this parcel combines privacy with proximity. Nestled between mature trees, the land is already sodded and includes two convenient access points via a front road and back alley. Power is already installed—just bring your builder. Located just a short walk from the beach, local shops, restaurants, a driving range, golf course, and many more summer attractions, this lot offers year-round recreation and relaxation in one of Alberta's most sought-after lake communities (id:6769)

Listing Presented By:



Originally Listed by:
RE/MAX Elite

<http://www.marceltessier.com/>



Royal

Le Page Noralta Spruce Grove

#230, 70 Mcleod Ave , Spruce Grove, AB,

Phone: 780-920-0550
Fax:
tyson@royalpage.ca

The property information on this website is derived from the Canadian Real Estate Association's Data Distribution Facility (DDF®). DDF® references real estate listings held by various brokerage firms and franchisees. The accuracy of information is not guaranteed and should be independently verified. The trademarks REALTOR®, REALTORS® and the REALTOR® logo are controlled by The Canadian Real Estate Association (CREA) and identify real estate professionals who are members of CREA. The trademarks MLS®, Multiple Listing Service® and the associated logos are owned by CREA and identify the quality of services provided by real estate professionals who are members of CREA.