



## Edmonton Alberta

\$279,000

What a view! LUXURY 14th FLOOR ADULT ONLY PENTHOUSE SUITE. Fully remodelled one bedroom with sweeping east-facing views PLUS IN-SUITE LAUNDRY & AIR CONDITIONING. The walkability to everything here is 10+++ . Stroll over to Mill Woods Town Centre to enjoy a coffee or gift shopping trip. Enjoy a massive green space directly across the street or grab a fitness class or a swim at the nearby city recreation centre. A short drive to Costco and major arteries connecting to the rest of the city. Edmonton's brand new Valley Line LRT is steps outside the building. CONDO FEE INCLUDES ALL UTILITIES INCLUDING ELECTRICITY. Titled U/G parking stall is well lit & comes with a storage cage. This 55+ adult community is connected to Shepherd's Care Facility providing you access to full care services if ever needed. A full service dining room is available for main floor meals/in-suite delivery - all for a fee. All residents have access to the guest suite, 4th floor patio & garden, chapel & social room. Lovely place to land! (id:6769)

Living room 3.56 m X 4.59 m

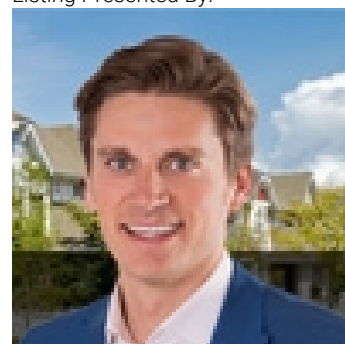
Dining room 2.41 m X 4.21 m

Kitchen 2.74 m X 4.01 m

Primary Bedroom 3.2 m X 5.88 m

Laundry room 2.36 m X 1.66 m

Listing Presented By:



Originally Listed by:  
RE/MAX Elite

<http://wendyandwilson.com/>



CREA

DDF

#230, 70 Mcleod Ave , Spruce  
Grove, AB,

Phone: 780-920-0550  
tyson@royallepage.ca

The property information on this website is derived from the Canadian Real Estate Association's Data Distribution Facility (DDF®). DDF® references real estate listings held by various brokerage firms and franchisees. The accuracy of information is not guaranteed and should be independently verified. The trademarks REALTOR®, REALTORS® and the REALTOR® logo are controlled by The Canadian Real Estate Association (CREA) and identify real estate professionals who are members of CREA. The trademarks MLS®, Multiple Listing Service® and the associated logos are owned by CREA and identify the quality of services provided by real estate professionals who are members of CREA.