



## Sherwood Park Alberta

\$315,000

This well maintained and spacious 2 bedroom/2.5 bath/ 3 storey home in desirable Emerald Hills. Main floor boasts quality finishings, ample natural light, gorgeous open concept living space and granite counters in the kitchen. Living room features a large front balcony off of the main entrance to enjoy the fresh air and green space. Main level complete w/ 2pc bathroom and laundry. Upper level boasts 2 well-sized bedrooms. Primary bedroom has 4pc ensuite & a walk-in closet. Plus 2nd shared 4pc bathroom upstairs. Other features include a attached tandem garage, plenty of storage, energy-efficient mechanical including tankless hot water for a lower utility bill. This well maintained complex offers visitor parking and is conveniently located close to shopping & walking trails. Quick proximity to Yellowhead & Baseline Rd, schools & public transportation. A must see! (id:6769)

Living room 7.53 m X 3.38 m

Dining room 3.47 m X 3.39 m

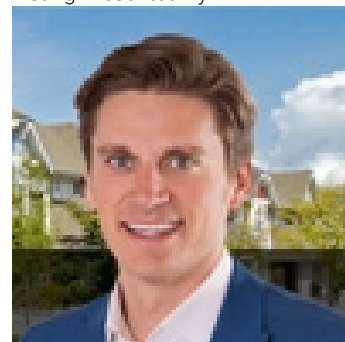
Kitchen 4.26 m X 3.06 m

Laundry room Measurements not available

Primary Bedroom 7.04 m X 4.65 m

Bedroom 2 3.35 m X 3.4 m

Listing Presented By:



Originally Listed by:  
RE/MAX Elite

<http://www.alangee.com/>



**Royal**

**Le Page Noralta Spruce Grove**

#230, 70 Mcleod Ave , Spruce Grove, AB,

Phone: 780-920-0550

Fax:

[tyson@royallepage.ca](mailto:tyson@royallepage.ca)

The property information on this website is derived from the Canadian Real Estate Association's Data Distribution Facility (DDF®). DDF® references real estate listings held by various brokerage firms and franchisees. The accuracy of information is not guaranteed and should be independently verified. The trademarks REALTOR®, REALTORS® and the REALTOR® logo are controlled by The Canadian Real Estate Association (CREA) and identify real estate professionals who are members of CREA. The trademarks MLS®, Multiple Listing Service® and the associated logos are owned by CREA and identify the quality of services provided by real estate professionals who are members of CREA.