



Edmonton Alberta

\$749,900

Welcome to Edgemont and this stunning BRAND NEW 2 storey built by New Vibe Homes Ltd. IMMEDIATE POSSESSION! Located in a cul de sac, next to park and BACKING TREES! Spacious front entry, grand vaulted ceilings in living room with big windows and electric fireplace, open concept kitchen with plenty of cabinets, pantry, ISLAND with quartz counters throughout, stainless steel appliances including GAS STOVE, Dining area with access to your private deck! Half bathroom, large mud room to your double 22'x23.5' attached garage! Upper level features Primary bedroom with spa like 5 piece ensuite, walk in closet & big bright windows! Laundry room with sink and cabinets, 2nd and 3rd bedrooms, 4 piece bathroom, desk area open to below, BONUS ROOM with a view to your private treed backyard! Excellent layout and top notch finishes throughout! (id:6769)

Living room 3.47 m X 5.42 m

Dining room 4.27 m X 2.72 m

Kitchen 4.85 m X 5.42 m

Family room Measurements not available

Primary Bedroom 3.36 m X 4.03 m

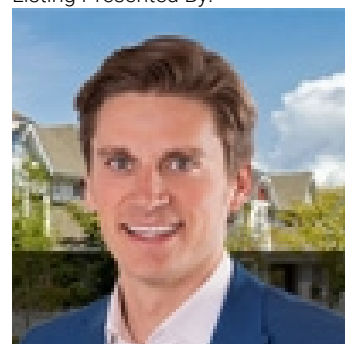
Bedroom 2 4.01 m X 3.07 m

Bedroom 3 3.92 m X 3.25 m

Bonus Room 5.15 m X 4.05 m

Laundry room 1.96 m X 2.87 m

Listing Presented By:



Originally Listed by:
RE/MAX Elite

<https://www.sergiosells.ca/>



CREA

DDF

#230, 70 Mcleod Ave , Spruce Grove, AB,

Phone: 780-920-0550
tyson@royalpage.ca

The property information on this website is derived from the Canadian Real Estate Association's Data Distribution Facility (DDF®). DDF® references real estate listings held by various brokerage firms and franchisees. The accuracy of information is not guaranteed and should be independently verified. The trademarks REALTOR®, REALTORS® and the REALTOR® logo are controlled by The Canadian Real Estate Association (CREA) and identify real estate professionals who are members of CREA. The trademarks MLS®, Multiple Listing Service® and the associated logos are owned by CREA and identify the quality of services provided by real estate professionals who are members of CREA.