



Edmonton Alberta

\$145,000

Opportunity knocks in this two-storey home located in a convenient community setting. Offering over 1,000 square feet above grade, this property features a functional main floor layout with a front living room, a kitchen with space for dining, and a convenient half bath. Upstairs, you'll find three bedrooms and a full bathroom. The unfinished basement offers potential for future development. Outside, enjoy a small fenced yard with space for outdoor enjoyment. This home is being sold as-is, where-is, and presents a great opportunity for buyers with vision to make it their own. (id:6769)

Living room 5.16 m X 3.17 m

Dining room 1.97 m X 3.2 m

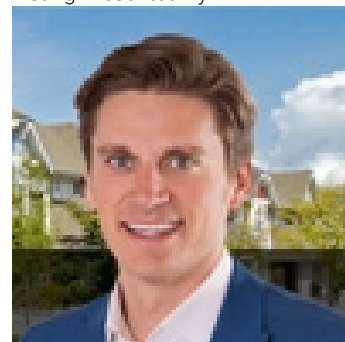
Kitchen 2.13 m X 3.19 m

Primary Bedroom 3.61 m X 3.21 m

Bedroom 2 3.35 m X 2.72 m

Bedroom 3 2.97 m X 2.43 m

Listing Presented By:



Originally Listed by:
RE/MAX Elite

<http://sarahlizee.ca/>



Royal

Le Page Noralta Spruce Grove

#230, 70 Mcleod Ave , Spruce Grove, AB,

Phone: 780-920-0550

Fax:

tyson@royallepage.ca

The property information on this website is derived from the Canadian Real Estate Association's Data Distribution Facility (DDF®). DDF® references real estate listings held by various brokerage firms and franchisees. The accuracy of information is not guaranteed and should be independently verified. The trademarks REALTOR®, REALTORS® and the REALTOR® logo are controlled by The Canadian Real Estate Association (CREA) and identify real estate professionals who are members of CREA. The trademarks MLS®, Multiple Listing Service® and the associated logos are owned by CREA and identify the quality of services provided by real estate professionals who are members of CREA.