



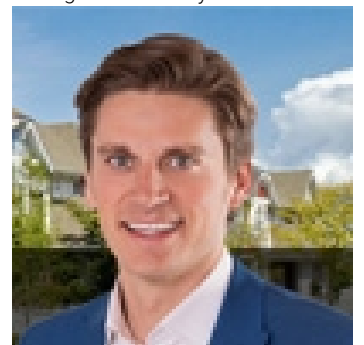
Edmonton Alberta

\$1,200,000

BUILD THE HOME OF YOUR DREAMS on this 1.1+ ACRE LOT IN WINDERMERE! Enjoy the comfort of City living with a FULLY-SERVICED LOT but with the size and serenity of acreage/country living. Nestled beside prominent neighborhoods such as Westpoint and Windermere Drive, this lot offers the opportunity to build the ESTATE HOME of your choosing--think large square footage, upper balconies/patios, walkout basement & 4-6 car garage! The possibilities are limitless. Plus the mature lot has plenty of privacy with ample foliage and year-round greenery. All nearby amenities accessible such as schools, casual and formal restaurants, box and local shopping, grocery stores, gyms, theatre & so much more. Tucked off the North Saskatchewan find quick river valley access or enjoy the many walking trails located throughout Windermere community. Video/drone footage available. (id:6769)

Primary Bedroom Measurements not available

Listing Presented By:



Originally Listed by:
RE/MAX Elite

<http://www.alangee.com/>



CREA

DDF

#230, 70 Mcleod Ave , Spruce
Grove, AB,

Phone: 780-920-0550
tyson@royallepage.ca

The property information on this website is derived from the Canadian Real Estate Association's Data Distribution Facility (DDF®). DDF® references real estate listings held by various brokerage firms and franchisees. The accuracy of information is not guaranteed and should be independently verified. The trademarks REALTOR®, REALTORS® and the REALTOR® logo are controlled by The Canadian Real Estate Association (CREA) and identify real estate professionals who are members of CREA. The trademarks MLS®, Multiple Listing Service® and the associated logos are owned by CREA and identify the quality of services provided by real estate professionals who are members of CREA.