



Edmonton Alberta

\$378,800

FIRST TIME HOME BUYERS. INVESTORS. This lovely 1063 sf bungalow is nestled on a quiet street in the sought after neighborhood of Lynnwood. Conveniently located close to shopping, eateries & transit. WEM & the Misc Hospital are all close by w/excellent access to Downtown & the U of A. Lots of updates/ upgrades over the year including vinyl windows, mechanical (older but not original), shingles, electrical, maple kitchen (Bosch DW) & some newer light fixtures. Brand new maintenance free vinyl fence installed on the east & west side. Lots of natural light in this bright cheery 2 bedrm + den (easily converted back to a third bedrm) home. Hardwood w/a quick refinish can bring it back to new! Updated bathrm. F/Fin bsmt with huge L shaped family rm & a potential bedrm. 2nd bathrm & laundry storage area completes the lower level. Spacious yard w/a single detached garage w/gar opener. Lots of space for a big double or maybe even a triple. Sunny front deck for the sun lovers! Easy access to all parts of the City (id:6769)

Family room 7.19 m X 3.59 m

Recreation room 2.38 m X 4.18 m

Living room 3.48 m X 4.71 m

Dining room 2.59 m X 2.22 m

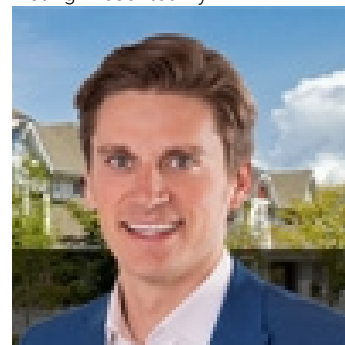
Kitchen 4.37 m X 4.04 m

Den 3.66 m X 2.53 m

Primary Bedroom 3.07 m X 2.84 m

Bedroom 2 3.07 m X 3.36 m

Listing Presented By:



Originally Listed by:
RE/MAX Elite

<http://www.alangee.com/>



CREA

DDF

#230, 70 Mcleod Ave , Spruce
Grove, AB,

Phone: 780-920-0550
tyson@royallepage.ca

The property information on this website is derived from the Canadian Real Estate Association's Data Distribution Facility (DDF®). DDF® references real estate listings held by various brokerage firms and franchisees. The accuracy of information is not guaranteed and should be independently verified. The trademarks REALTOR®, REALTORS® and the REALTOR® logo are controlled by The Canadian Real Estate Association (CREA) and identify real estate professionals who are members of CREA. The trademarks MLS®, Multiple Listing Service® and the associated logos are owned by CREA and identify the quality of services provided by real estate professionals who are members of CREA.