

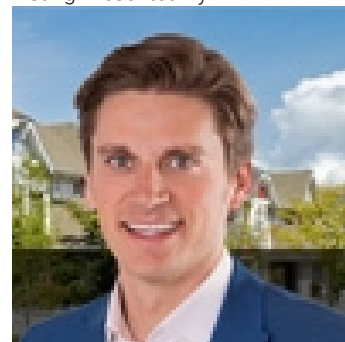


Rural Parkland County Alberta

\$125,000

Come take your place among the scenic paradise of this four season resort, at Trestle Creek. Just 45 minutes west of Edmonton, you will find the lifestyle you have been craving without all the travel! Whether it's rest and relaxation, or the excitement of year round activities that you are looking for, you will find it all in this community. Owners of this lot will enjoy access to a world-class 27 hole golf course, horseback riding, beach, boating, waterslides, soccer/football field, baseball diamond, and even an off-leash dog walking park for those furry family members. Prefer to stay indoors? Well that's coming soon too, as a 10,000 sq ft facility offers an indoor pool, hot tubs, climbing wall, fitness room, gym, games room, video arcade, movie theatre and more! You can't put a price on the value of your time, and you're sure to love every second that your family & friends are able to share in all of this with you. Don't waste another summer, this lot is available immediately! This is a bareland condo. (id:6769)

Listing Presented By:



Originally Listed by:
Royal LePage Noralta Real Estate

<http://movewithmarty.realtor/>



CREA

DDF

#230, 70 Mcleod Ave , Spruce
Grove, AB,

Phone: 780-920-0550
tyson@royallepage.ca

The property information on this website is derived from the Canadian Real Estate Association's Data Distribution Facility (DDF®). DDF® references real estate listings held by various brokerage firms and franchisees. The accuracy of information is not guaranteed and should be independently verified. The trademarks REALTOR®, REALTORS® and the REALTOR® logo are controlled by The Canadian Real Estate Association (CREA) and identify real estate professionals who are members of CREA. The trademarks MLS®, Multiple Listing Service® and the associated logos are owned by CREA and identify the quality of services provided by real estate professionals who are members of CREA.