

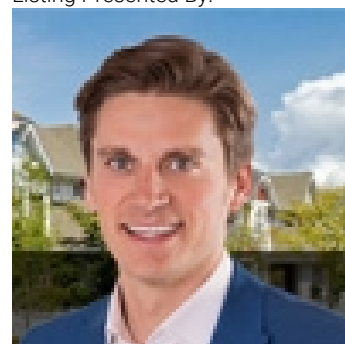


Edmonton Alberta

\$0

COMMERCIAL LISTING! MLS #E4441574 Community of Mistatim Industrial 15454 131 ave Priced at \$1,550,000 Or LEASE \$14/sq ft plus \$6 opp costs Marketed by SergioSells.ca from Remax Elite Prime opportunity to own a versatile commercial space in the well-established Mistatim Industrial Area. This offering includes two combined units, totaling: 7,557 sq ft on the main floor 855 sq ft on the first mezzanine level 2,812 sq ft on the second mezzanine level Total developed space: 11,224 sq ft Zoned IM (Medium Industrial District), this property allows for a variety of industrial and commercial uses, including warehouse, light manufacturing, retail showroom, service-based businesses, and more. Property Highlights: Built in 2007 - modern construction and functionality Lot size: 832 square meters Excellent access to major transportation routes including Yellowhead Trail, Anthony Henday, and St. Albert Trail Ideal for owner-users, investors, or expanding businesses Well-maintained and move-in ready This is a rare opportunity to secure a large, adaptable commercial space in a sought-after industrial node of northwest Edmonton. (id:6769)

Listing Presented By:



Originally Listed by:
RE/MAX Elite

<https://www.sergiosells.ca/>



Royal

Le Page Noralta Spruce Grove

#230, 70 Mcleod Ave , Spruce Grove, AB,

Phone: 780-920-0550

Fax:

tyson@royallepage.ca

The property information on this website is derived from the Canadian Real Estate Association's Data Distribution Facility (DDF®). DDF® references real estate listings held by various brokerage firms and franchisees. The accuracy of information is not guaranteed and should be independently verified. The trademarks REALTOR®, REALTORS® and the REALTOR® logo are controlled by The Canadian Real Estate Association (CREA) and identify real estate professionals who are members of CREA. The trademarks MLS®, Multiple Listing Service® and the associated logos are owned by CREA and identify the quality of services provided by real estate professionals who are members of CREA.