



Edmonton Alberta

\$668,800

Stunning, upgraded Homes By Avi in the thriving community of Glenridding & tucked on a quiet cul-de-sac. Spacious main level offers open concept w/ feature fireplace & the perfect kitchen equipped w/ oversized island, gas stove, & upgraded appliances. Find convenience w/ a walk through mudrm into pantry & kitchen. Unique upstairs layout w/ bonus rm, flex rm/office, 2 spare bdrms (each contains walk-in closets), 4pc bthrm, laundry rm & large primary suite boasting walk-in closet, dual sinks, soaker tub & ceiling-height tiled shower. Professionally developed basement offers a sizeable rec area w/ wetbar, flex rm & gorgeous 3pc bthrm for ttl living space 2,650+sf. Backyard boasts sizeable deck w/ pergola & SW exposure. Additional features incl water softener, garage heater & additional shelving, BBQ gas line, side entrance, HRV, additional sinks in mechanical room, upgraded blinds, quartz counters throughout & so much more! Convenient location w/ easy access to Henday & shopping in Windermere. A must see! (id:6769)

Recreation room 6.59 m X 4.24 m

Living room 4.73 m X 3.24 m

Dining room 3.19 m X 3.11 m

Kitchen 3.38 m X 2.91 m

Den 1.72 m X 2.73 m

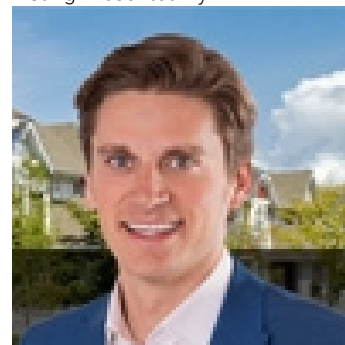
Primary Bedroom 3.95 m X 3.6 m

Bedroom 2 2.87 m X 3.28 m

Bedroom 3 3.02 m X 3.72 m

Bonus Room 3.96 m X 4.03 m

Listing Presented By:



Originally Listed by:
RE/MAX Elite

<http://www.alangee.com/>



CREA

DDF

#230, 70 Mcleod Ave , Spruce
Grove, AB,

Phone: 780-920-0550
tyson@royallepage.ca

The property information on this website is derived from the Canadian Real Estate Association's Data Distribution Facility (DDF®). DDF® references real estate listings held by various brokerage firms and franchisees. The accuracy of information is not guaranteed and should be independently verified. The trademarks REALTOR®, REALTORS® and the REALTOR® logo are controlled by The Canadian Real Estate Association (CREA) and identify real estate professionals who are members of CREA. The trademarks MLS®, Multiple Listing Service® and the associated logos are owned by CREA and identify the quality of services provided by real estate professionals who are members of CREA.