

Edmonton Alberta

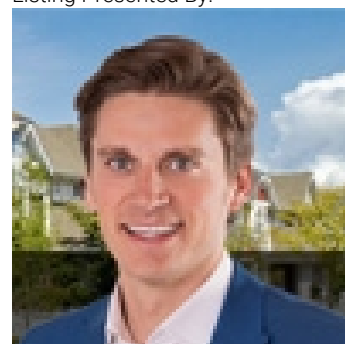
\$388,000

Substantially renovated raised bungalow in excellent Mayfield location. There is over 1500 sq feet of total living space. A large living room could be split into a dining room/living room. Bright south facing, spacious kitchen with ample cabinets, stainless steel appliances and newer flooring. The lower level had a new foundation/basement in the early 1990's plus a sump pump, weeping tile & updated electrical. One of the bedrooms downstairs could be used as the primary. Newer flooring throughout lower level. The family room is ideal for a home theater or a rec. room. The laundry room has new washer and dryer, a sink and cabinets. Recent paint throughout. Raised deck overlooking south backyard. Concrete patio too! Oversized double heated garage with newer doors openers and a floor drain. Newer shingles on home and garage. Ready to move into and enjoy! (id:6769)

Family room 3.8 m X 3.2 m
Bedroom 2 3.3 m X 2.4 m
Bedroom 3 4.8 m X 3.3 m
Bedroom 4 3.2 m X 3 m
Laundry room 2.4 m X 2.2 m

Utility room 2.2 m X 1.3 m
Living room 8.3 m X 3.4 m
Kitchen 4.5 m X 3.9 m
Primary Bedroom 3.5 m X 2.4 m

Listing Presented By:



Originally Listed by:
RE/MAX Elite

<http://www.calldale4asale.com/>



CREA

DDF

#230, 70 Mcleod Ave , Spruce
Grove, AB,

Phone: 780-920-0550
tyson@royallepage.ca

The property information on this website is derived from the Canadian Real Estate Association's Data Distribution Facility (DDF®). DDF® references real estate listings held by various brokerage firms and franchisees. The accuracy of information is not guaranteed and should be independently verified. The trademarks REALTOR®, REALTORS® and the REALTOR® logo are controlled by The Canadian Real Estate Association (CREA) and identify real estate professionals who are members of CREA. The trademarks MLS®, Multiple Listing Service® and the associated logos are owned by CREA and identify the quality of services provided by real estate professionals who are members of CREA.