



Edmonton Alberta

\$699,888

Welcome to this beautiful SOUTH-BACKING home in Glenriding Ravine with over 2,660 sq ft of living space, including a FULLY LEGAL BASEMENT SUITE. The main floor features a versatile bedroom/flex room, a bright open-to-below living room, and a luxurious kitchen with QUARTZ countertops, STAINLESS STEEL appliances, ample cabinetry, pantry and a stylish WINE/ESPRESSO BAR with GLASS CABINERY to entertain guests. A full 4-pc bathroom makes the main level ideal for guests or multi-generational living. Upstairs offers a central bonus room, 3 spacious bedrooms, a 4-pc bath, laundry and a primary suite with a 5-PC ENSUITE featuring your own SOAKER TUB and WALK-IN CLOSET. The LEGAL BASEMENT SUITE includes a full kitchen, living room, bedroom, 4-pc bath and its own laundry. Enjoy summer BBQs on your DECK overlooking the SOUTH-facing backyard, or stay cool indoors with central A/C. A double garage and nearby ravine walking trails complete this exceptional home. This is the perfect blend of luxury and functionality! (id:6769)

Bedroom 4 Measurements not available

Living room Measurements not available

Dining room Measurements not available

Kitchen Measurements not available

Bedroom 5 Measurements not available

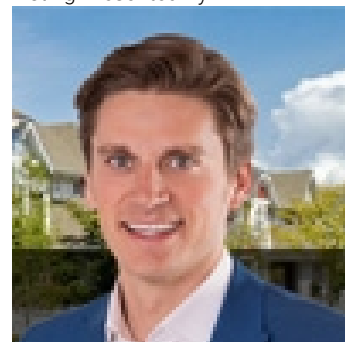
Family room Measurements not available

Primary Bedroom Measurements not available

Bedroom 2 Measurements not available

Bedroom 3 Measurements not available

Listing Presented By:



Originally Listed by:
RE/MAX Elite

<http://www.ricardobrito.ca/>



Royal

Le Page Noralta Spruce Grove

#230, 70 Mcleod Ave , Spruce Grove, AB,

Phone: 780-920-0550

Fax:

tyson@royallepage.ca

The property information on this website is derived from the Canadian Real Estate Association's Data Distribution Facility (DDF®). DDF® references real estate listings held by various brokerage firms and franchisees. The accuracy of information is not guaranteed and should be independently verified. The trademarks REALTOR®, REALTORS® and the REALTOR® logo are controlled by The Canadian Real Estate Association (CREA) and identify real estate professionals who are members of CREA. The trademarks MLS®, Multiple Listing Service® and the associated logos are owned by CREA and identify the quality of services provided by real estate professionals who are members of CREA.