



## St. Albert Alberta

\$655,800

End unit walk out bungalow in Villas at Lacombe Park. Adult (40+) living. Exceptional location backing onto green belt and walk way. Luxury finishes including hardwood floors & granite counters. Main floor laundry. Spacious primary bedroom features walk-in closet, ensuite with large glass shower. Main floor den. Open kitchen with granite island. Nice size living room. Access to large deck with south and west exposure. Professionally finished lower level features large recreation area with room for a pool table. There is a door to the walk out patio area. Second bedroom plus a four piece bath. Central air conditioning. Lacombe Park Estates is one of the premiere subdivisions in St. Albert. Quick access to commuter routes. (id:6769)

Bedroom 2 3.9 m X 3.2 m

Recreation room 7.9 m X 5.4 m

Utility room 7.9 m X 4.5 m

Living room 5.1 m X 4.3 m

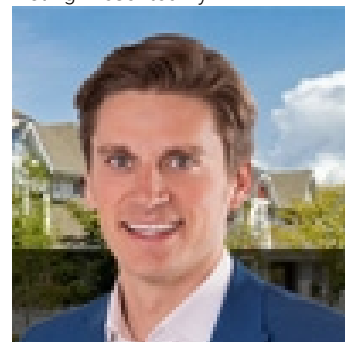
Dining room 3.8 m X 2.1 m

Kitchen 3.9 m X 3.5 m

Den 2.7 m X 2.6 m

Primary Bedroom 4.2 m X 4 m

Listing Presented By:



Originally Listed by:  
RE/MAX Elite

<http://www.calldale4asale.com/>



**Royal**

**Le Page Noralta Spruce Grove**

#230, 70 Mcleod Ave , Spruce Grove, AB,

Phone: 780-920-0550

Fax:

tyson@royalpage.ca

The property information on this website is derived from the Canadian Real Estate Association's Data Distribution Facility (DDF®). DDF® references real estate listings held by various brokerage firms and franchisees. The accuracy of information is not guaranteed and should be independently verified. The trademarks REALTOR®, REALTORS® and the REALTOR® logo are controlled by The Canadian Real Estate Association (CREA) and identify real estate professionals who are members of CREA. The trademarks MLS®, Multiple Listing Service® and the associated logos are owned by CREA and identify the quality of services provided by real estate professionals who are members of CREA.