



Edmonton Alberta

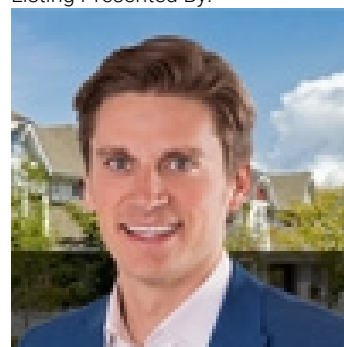
\$889,000

Welcome to the epitome of luxury living in the prestigious Aster community! Introducing the exquisite Jannat model, boasting 4 spacious bedrooms, each complemented by its own full washroom, including a main floor bedroom for added convenience. The awe-inspiring open-to-below design creates an expansive feel throughout the home. Culinary enthusiasts will delight in the inclusion of a spice kitchen, perfect for culinary adventures. Stay cool in the summer with the included air conditioner, and enjoy the comfort of a heated garage during the colder months. Plus, benefit from additional income with a 2-bedroom legal suite, already rented out for \$1550/month, making this residence both opulent and financially savvy. Don't miss your chance to experience luxury living at its finest! (id:6769)

Living room 4.2 m X 3.22 m
Dining room 3.57 m X 3.17 m
Kitchen 6.46 m X 2.66 m
Family room 5.24 m X 3.41 m
Bedroom 2 3.54 m X 3.11 m

Primary Bedroom 5.79 m X 4.86 m
Bedroom 3 3.54 m X 3.47 m
Bedroom 4 5.63 m X 4.07 m
Bonus Room 4.11 m X 4.02 m

Listing Presented By:



Originally Listed by:
RE/MAX Elite



CREA

DDF

#230, 70 Mcleod Ave , Spruce
Grove, AB,

Phone: 780-920-0550
tyson@royallepage.ca

The property information on this website is derived from the Canadian Real Estate Association's Data Distribution Facility (DDF®). DDF® references real estate listings held by various brokerage firms and franchisees. The accuracy of information is not guaranteed and should be independently verified. The trademarks REALTOR®, REALTORS® and the REALTOR® logo are controlled by The Canadian Real Estate Association (CREA) and identify real estate professionals who are members of CREA. The trademarks MLS®, Multiple Listing Service® and the associated logos are owned by CREA and identify the quality of services provided by real estate professionals who are members of CREA.