



## Edmonton Alberta

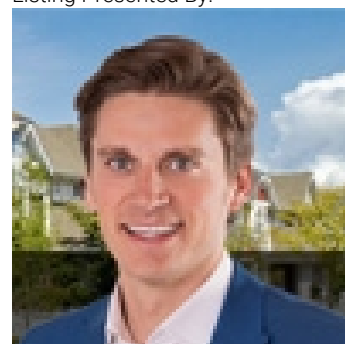
\$559,900

Welcome to this charming 3-bedroom, 2.5-bath single-family home in the highly sought-after Laurel Crossing community. With over 1,800 sq ft of well-maintained living space, this property offers the perfect blend of comfort and convenience. Situated on a regular lot, it backs onto serene green space, providing a peaceful retreat. Located within walking distance to schools, the Meadows Rec Center, banks, grocery stores, and more, this home is ideal for families. Don't miss out on this incredible opportunity to own in one of the most desirable neighborhoods! (id:6769)

Living room 4.8 m X 4.12 m  
Dining room 3.64 m X 3.55 m  
Kitchen 3.75 m X 3.55 m  
Family room 4.46 m X 5.79 m

Primary Bedroom 4.08 m X 3.72 m  
Bedroom 2 3.56 m X 2.92 m  
Bedroom 3 3.81 m X 2.9 m

Listing Presented By:



Originally Listed by:  
RE/MAX Elite



CREA

DDF

#230, 70 Mcleod Ave , Spruce  
Grove, AB,

Phone: 780-920-0550  
tyson@royallepage.ca

The property information on this website is derived from the Canadian Real Estate Association's Data Distribution Facility (DDF®). DDF® references real estate listings held by various brokerage firms and franchisees. The accuracy of information is not guaranteed and should be independently verified. The trademarks REALTOR®, REALTORS® and the REALTOR® logo are controlled by The Canadian Real Estate Association (CREA) and identify real estate professionals who are members of CREA. The trademarks MLS®, Multiple Listing Service® and the associated logos are owned by CREA and identify the quality of services provided by real estate professionals who are members of CREA.