



Edmonton Alberta

\$489,900

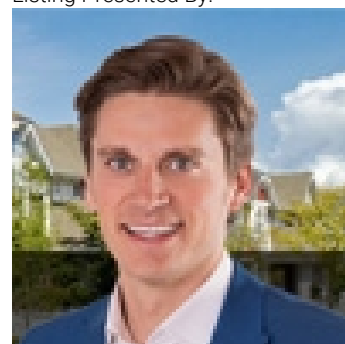
Set on one of the largest (8,550 sq.ft) lots in the area, this beautifully updated home offers refined comfort with room to roam. This 3 bedroom + bonus room, 2 bath residence blends modern style with everyday function. The main floor features an inviting living space with a gas fireplace, flowing into an open-concept kitchen and dining area with stainless steel appliances and deck access. Upstairs offers a bright bonus room, spacious primary bedroom, secondary bedroom, and a full bath. The third level adds a generous family room, additional bedroom, 3-piece bath, and laundry with rear entry--ideal for busy households (and the occasional muddy paws). The 4th level includes a giant crawl space. Outside, the expansive yard on this trophy lot is a rare find--perfect for entertaining, relaxing, or letting a few "wild" imaginations run free. RV parking and a double detached garage complete the package. Welcome to Terwillegar Towne--where space, style, and a little personality come together. (id:6769)

Bedroom 3 Measurements not available

Bedroom 2 Measurements not available

Primary Bedroom Measurements not available

Listing Presented By:



Originally Listed by:
RE/MAX Elite

<http://www.damonenns.com/>



Royal

Le Page Noralta Spruce Grove

#230, 70 Mcleod Ave , Spruce
Grove, AB,

Phone: 780-920-0550

Fax:

tyson@royalpage.ca

The property information on this website is derived from the Canadian Real Estate Association's Data Distribution Facility (DDF®). DDF® references real estate listings held by various brokerage firms and franchisees. The accuracy of information is not guaranteed and should be independently verified. The trademarks REALTOR®, REALTORS® and the REALTOR® logo are controlled by The Canadian Real Estate Association (CREA) and identify real estate professionals who are members of CREA. The trademarks MLS®, Multiple Listing Service® and the associated logos are owned by CREA and identify the quality of services provided by real estate professionals who are members of CREA.