

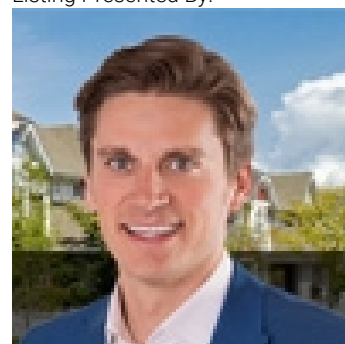


Edmonton Alberta

\$435,000

High traffic Location with Front Exposure to 111 Ave. Minutes from Yellowhead and Anthony Henday. This 2105 SF Industrial Bay comes with Reception Area, Office, 2pc washroom up front and another 2pc shop washroom. Shop area has upgraded lighting, 16' O/H Door, Sump and generous Marshalling Area at rear. Shop area is +/- 73' x 22', mezzanine is +/- 54' x 22' with Laundry Facility. Immediate Occupancy (id:6769)

Listing Presented By:



Originally Listed by:
RE/MAX Elite

<http://www.nadiaoaman.com/>



CREA

DDF

#230, 70 Mcleod Ave , Spruce
Grove, AB,

Phone: 780-920-0550
tyson@royallepage.ca

The property information on this website is derived from the Canadian Real Estate Association's Data Distribution Facility (DDF®). DDF® references real estate listings held by various brokerage firms and franchisees. The accuracy of information is not guaranteed and should be independently verified. The trademarks REALTOR®, REALTORS® and the REALTOR® logo are controlled by The Canadian Real Estate Association (CREA) and identify real estate professionals who are members of CREA. The trademarks MLS®, Multiple Listing Service® and the associated logos are owned by CREA and identify the quality of services provided by real estate professionals who are members of CREA.