



Fort Saskatchewan Alberta

\$550,000

IMEDIATE POSSESSION!! Unveiling the Finn a front-attached garage offering contemporary flair with functional brilliance. Step into a space where the living, dining, and kitchen areas flow seamlessly together, anchored by a central island. The living area offers warmth and charm, courtesy of an electric fireplace, making it an ideal spot for unwinding or entertaining. With 3 generous bedrooms, including a primary sanctuary boasting a spacious walk-in closet, the Finn offers ample accommodation for family and guests. Indulge in the primary ensuite, featuring a freestanding soaker tub and a double vanity. The home's design incorporates a walk-through mudroom/pantry, ensuring convenient access while maintaining an organized living environment. Experience the perfect fusion of sophistication and functionality in the Finn where luxury and comfort converge in modern living. (id:6769)

Living room 3.96 m X 4.78 m

Dining room 3.96 m X 3.56 m

Kitchen 3.68 m X 4.11 m

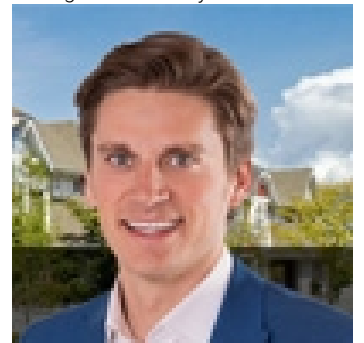
Primary Bedroom 3.96 m X 3.96 m

Bedroom 2 4.27 m X 3.35 m

Bedroom 3 3.1 m X 3.96 m

Bonus Room 3.96 m X 4.8 m

Listing Presented By:



Originally Listed by:
RE/MAX Excellence



CREA

DDF

#230, 70 Mcleod Ave , Spruce
Grove, AB,

Phone: 780-920-0550
tyson@royallepage.ca

The property information on this website is derived from the Canadian Real Estate Association's Data Distribution Facility (DDF®). DDF® references real estate listings held by various brokerage firms and franchisees. The accuracy of information is not guaranteed and should be independently verified. The trademarks REALTOR®, REALTORS® and the REALTOR® logo are controlled by The Canadian Real Estate Association (CREA) and identify real estate professionals who are members of CREA. The trademarks MLS®, Multiple Listing Service® and the associated logos are owned by CREA and identify the quality of services provided by real estate professionals who are members of CREA.