



Stony Plain Alberta

\$220,000

Escape to GRAYBRIAR GREENS in Stony Plain where a maintenance free lifestyle & ROCKY MOUNTAIN vibe awaits! This CORNER UNIT 2 bed|1.5 bath Bi-level townhouse w/double assigned CARPORT parking stalls complete w/outdoor storage locker is perfectly suited for first-time homebuyers, or those looking to downsize. Offering comfort & convenience w/modern style the upper level has 9' ceilings, granite cntrs & features an open concept kitchen/dining w/living room space plus a 2pce guest bath. Lower level offers TWO well sized bedrms, full 4pce bath, laundry & utility/storage room. Privately set & created to mirror a majestic mountain village retreat, Graybriar Greens provides the convenience of exterior maintenance including outdoor landscape/snow removal, is located close to park/playgrounds, walking trails, & Stony Plain Golf course w/many essential shopping amenities nearby. Conveniently located for quick access to Hwy 16A making for an easier commute. (id:6769)

Primary Bedroom 3.47 m X 3.25 m

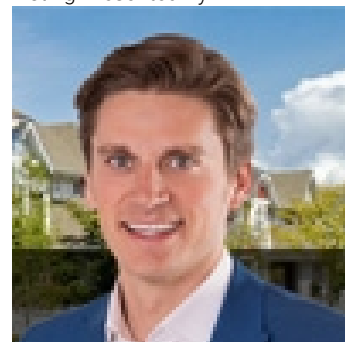
Bedroom 2 3.73 m X 3.6 m

Living room 5.96 m X 4.34 m

Dining room 2.38 m X 2.48 m

Kitchen 3.47 m X 2.38 m

Listing Presented By:



Originally Listed by:
Royal LePage Noralta Real Estate

<https://tysonmoroz.com/>



**Royal
Le Page Noralta Spruce Grove**

#230, 70 Mcleod Ave , Spruce
Grove, AB,

Phone: 780-920-0550
Fax:
tyson@royallepage.ca

The property information on this website is derived from the Canadian Real Estate Association's Data Distribution Facility (DDF®). DDF® references real estate listings held by various brokerage firms and franchisees. The accuracy of information is not guaranteed and should be independently verified. The trademarks REALTOR®, REALTORS® and the REALTOR® logo are controlled by The Canadian Real Estate Association (CREA) and identify real estate professionals who are members of CREA. The trademarks MLS®, Multiple Listing Service® and the associated logos are owned by CREA and identify the quality of services provided by real estate professionals who are members of CREA.