



Edmonton Alberta

\$662,000

THE PERFECT FAMILY HOME! Situated in the sought-after RIVERBEND neighborhood, this spacious 4 BEDROOM, 4 BATHROOM family home BACKS ONTO TOMLINSON PARK and is adjacent to the lake. The custom floorplan provides a massive main floor. This features a huge kitchen, main floor office, AND a versatile flex room, perfect for a music room, playroom, library, or dining room. The fully finished basement adds even more space, whether you need a rec room, home gym, or additional storage. RECENT UPDATES, including a new FURNACE, AIR CONDITIONING, and ROOF, ensure comfort and peace of mind. Outside enjoy your view and privacy with a large deck that is the perfect spot to relax and enjoy the beautiful park vistas, ideal for entertaining or quiet moments with family. You will love the convenience of being within walking distance to all amenities and situated in a great school catchment area. This home is a truly unique! (id:6769)

Bedroom 4 Measurements not available

Living room Measurements not available

Dining room Measurements not available

Kitchen Measurements not available

Family room Measurements not available

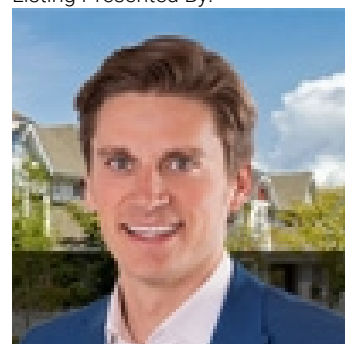
Den Measurements not available

Primary Bedroom Measurements not available

Bedroom 2 Measurements not available

Bedroom 3 Measurements not available

Listing Presented By:



Originally Listed by:
RE/MAX Elite



Royal

Le Page Noralta Spruce Grove

#230, 70 Mcleod Ave , Spruce Grove, AB,

Phone: 780-920-0550

Fax:

tyson@royallepage.ca

The property information on this website is derived from the Canadian Real Estate Association's Data Distribution Facility (DDF®). DDF® references real estate listings held by various brokerage firms and franchisees. The accuracy of information is not guaranteed and should be independently verified. The trademarks REALTOR®, REALTORS® and the REALTOR® logo are controlled by The Canadian Real Estate Association (CREA) and identify real estate professionals who are members of CREA. The trademarks MLS®, Multiple Listing Service® and the associated logos are owned by CREA and identify the quality of services provided by real estate professionals who are members of CREA.