



Fort Saskatchewan Alberta

\$439,000

Located in Southfort Meadows, this home features a south-facing backyard and a SIDE ENTRANCE, perfect for a future suite. The main floor boasts 9-foot ceilings, premium vinyl plank flooring, and sleek kitchen cabinetry extending to the ceiling. The 23.5' deep double-attached garage provides ample space for vehicles and storage. Upstairs, enjoy three spacious bedrooms, including a primary suite with a walk-in closet which is ensuite. A bonus room, laundry closet, and full bathroom add convenience. Community amenities nearby include a recreation centre, ice rink, and nearby schools like Southpointe Elementary and St. Andr Bessette High. This pre-construction duplex offers 1,508 sq. ft. of modern living with possession before the end of winter, currently at the mechanical stage. Photos are representative of the show home. Dont miss this opportunity! (id:6769)

Living room Measurements not available

Dining room Measurements not available

Kitchen Measurements not available

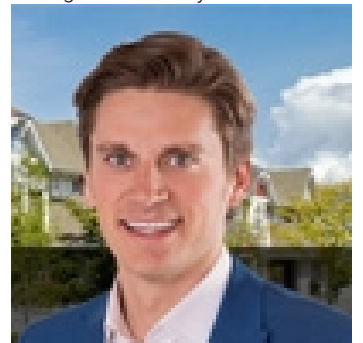
Primary Bedroom Measurements not available

Bedroom 2 Measurements not available

Bedroom 3 Measurements not available

Bonus Room Measurements not available

Listing Presented By:



Originally Listed by:
RE/MAX Excellence



CREA

DDF

#230, 70 Mcleod Ave , Spruce Grove, AB,

Phone: 780-920-0550
tyson@royallepage.ca

The property information on this website is derived from the Canadian Real Estate Association's Data Distribution Facility (DDF®). DDF® references real estate listings held by various brokerage firms and franchisees. The accuracy of information is not guaranteed and should be independently verified. The trademarks REALTOR®, REALTORS® and the REALTOR® logo are controlled by The Canadian Real Estate Association (CREA) and identify real estate professionals who are members of CREA. The trademarks MLS®, Multiple Listing Service® and the associated logos are owned by CREA and identify the quality of services provided by real estate professionals who are members of CREA.