



Fort Saskatchewan Alberta

\$575,000

Massive 2 Storey, completely finished, 5 Bedroom Fort Saskatchewan Home, across from a play park, is move-in ready! This newer, high-end finishing style Home, is walking distance to an abundance of Coffee Shops, Restaurants/Patios and the Dow Centennial Recreation Centre. Enjoy being conveniently located exactly 15 minutes to Sherwood Park and only 30 minutes to Edmonton. Living here, you can enjoy the benefits of being a short drive to the City each day for work and then completely retreating to your small-town, family-focused lifestyle on the Weekend. With AC, a fully fenced-in yard, a back deck, a huge bonus room upstairs, a Home Gym Area downstairs and even some extra room for a spacious home theatre room in the fully finished basement; the hangout options in this Home are unlimited! The heart of this home, however, can be found in the one-of-a-kind kitchen with coffered ceilings, a large breakfast bar, sleek granite countertops and a huge dining area. Send out the House Warming Invitations now! (id:6769)

Family room 13'11" x 22'7"

Bedroom 4 11'3" x 16'2"

Bedroom 5 11'2" x 14'

Living room 14'7" x 19'8"

Dining room 12' x 11'4"

Kitchen 12' x 13'7"

Den 11'11" x 12'

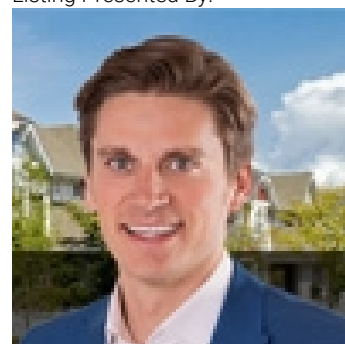
Primary Bedroom 16'3" x 17'1"

Bedroom 2 11'8" x 11'11"

Bedroom 3 11'8" x 11'5"

Bonus Room 16'7" x 15'4"

Listing Presented By:



Originally Listed by:
Liv Real Estate



CREA

DDF

#230, 70 Mcleod Ave , Spruce Grove, AB,

Phone: 780-920-0550
tyson@royallepage.ca

The property information on this website is derived from the Canadian Real Estate Association's Data Distribution Facility (DDF®). DDF® references real estate listings held by various brokerage firms and franchisees. The accuracy of information is not guaranteed and should be independently verified. The trademarks REALTOR®, REALTORS® and the REALTOR® logo are controlled by The Canadian Real Estate Association (CREA) and identify real estate professionals who are members of CREA. The trademarks MLS®, Multiple Listing Service® and the associated logos are owned by CREA and identify the quality of services provided by real estate professionals who are members of CREA.