



Edmonton Alberta

\$439,900

Step on into the beautifully elegant 'Sage' by our favourite builder EXCEL HOMES! This is everything you could ask for in a laned home - a functional L-shaped kitchen overlooks the backyard, accompanied by a cute dining nook and a comfortable front living room for relaxing. Just up the stairs, you are greeted by the second-floor laundry, which separates the master suite from the additional two bedrooms. The option to develop the basement allows for an extra bedroom with a rec room and bathroom, perfect for entertaining or additional living space - even a suite with a side entrance. All this plus a GREEN BUILT CANADA Certification and a more affordable homeownership opportunity with lower utility costs and a cleaner, healthier home. Smart hub network, solar panel ready, all energy star appliances included in the price - this home just needs you! (id:6769)

Living room Measurements not available

Dining room Measurements not available

Kitchen Measurements not available

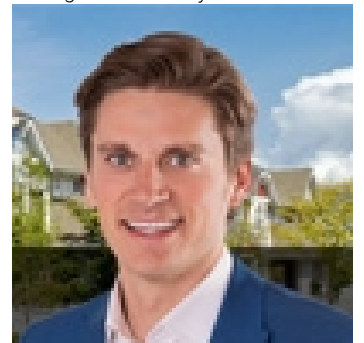
Primary Bedroom Measurements not available

Bedroom 2 Measurements not available

Bedroom 3 Measurements not available

Laundry room Measurements not available

Listing Presented By:



Originally Listed by:
RE/MAX Elite

<http://www.jolenelangelo.com/>



CREA

DDF

#230, 70 Mcleod Ave , Spruce
Grove, AB,

Phone: 780-920-0550
tyson@royallepage.ca

The property information on this website is derived from the Canadian Real Estate Association's Data Distribution Facility (DDF®). DDF® references real estate listings held by various brokerage firms and franchisees. The accuracy of information is not guaranteed and should be independently verified. The trademarks REALTOR®, REALTORS® and the REALTOR® logo are controlled by The Canadian Real Estate Association (CREA) and identify real estate professionals who are members of CREA. The trademarks MLS®, Multiple Listing Service® and the associated logos are owned by CREA and identify the quality of services provided by real estate professionals who are members of CREA.