



Fort Saskatchewan Alberta

\$345,000

The one you've been waiting for is FINALLY here! Welcome to 188 Santana Crescent in the very desirable family-oriented community of South Fort! This gorgeous 2-story attached family home OFFERS OVER 1500 SQFT of living space with 3 bedrooms and 2 1/2 bathrooms, AND NO CONDO FEES!! Upon entering, you'll be greeted by a generously sized open-concept floor plan, 9 ft ceilings, LED lighting, and laminate plank flooring throughout. The kitchen features dark maple-shaker style cabinetry, large island/breakfast bar, and black slate appliances. Complete with a 2pc bath and access to the DOUBLE ATTACHED GARAGE! The upper floor offers a 4 pc bath, 2 spacious bedrooms, a primary suite w/ walkthrough closet & 4pc ensuite, convenient laundry closet, bonus/family room, and access to your ROOFTOP PATIO over the garage! The unfinished basement is roughed in for future development and offers a HRV and high-efficiency heating system! This home is a MUST see. Don't let this one pass you by! (id:6769)

Living room 4.36 m X 3.93 m

Dining room 3.63 m X 2.08 m

Kitchen 3.58 m X 3.53 m

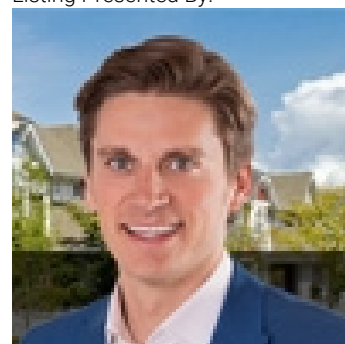
Primary Bedroom 4.25 m X 4 m

Bedroom 2 2.78 m X 3.36 m

Bedroom 3 2.95 m X 3.92 m

Bonus Room 2.72 m X 3.7 m

Listing Presented By:



Originally Listed by:
YEGPro Realty



CREA

DDF

#230, 70 Mcleod Ave , Spruce Grove, AB,

Phone: 780-920-0550
tyson@royallepage.ca

The property information on this website is derived from the Canadian Real Estate Association's Data Distribution Facility (DDF®). DDF® references real estate listings held by various brokerage firms and franchisees. The accuracy of information is not guaranteed and should be independently verified. The trademarks REALTOR®, REALTORS® and the REALTOR® logo are controlled by The Canadian Real Estate Association (CREA) and identify real estate professionals who are members of CREA. The trademarks MLS®, Multiple Listing Service® and the associated logos are owned by CREA and identify the quality of services provided by real estate professionals who are members of CREA.