



## Edmonton Alberta

\$629,800

Welcome to your new home in the prestigious Eagle Point at Country Club. Exclusive secure GATED adult community offering a tranquil lifestyle. Perfect for those seeking comfort, elegance & convenience! Beautifully maintained 1,916 sf half duplex bungalow w/a stunning circular foyer leading to the den/bedrm. The open concept floor plan boasts soaring 12' ceilings in the living & dining rm, creating a grand & airy space for relaxation & entertaining. Large windows flood the home w/natural light, highlighting the exquisite details throughout. The gourmet kitchen is a chef's dream, equipped w/SS appliances incl gas cooktop, W/I pantry, island w/granite counters. Enjoy your morning coffee or evening sunsets on the expansive 23' deck. Retreat to the spacious primary bedrm w/a luxurious 5 pc spa like ensuite w/10 mil glas. Just steps away from serene walking trails in the river valley & a private golf club, as well as easy access to Anthony Henday highway. This home combines the best of nature & urban living! (id:6769)

Living room 4.8 m X 6.4 m

Dining room 2.18 m X 2.72 m

Kitchen 3.19 m X 3.86 m

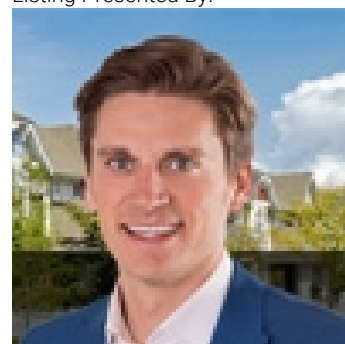
Family room 3.74 m X 4.16 m

Primary Bedroom 4.22 m X 5.45 m

Bedroom 2 3.76 m X 3.2 m

Laundry room 2.82 m X 1.89 m

Listing Presented By:



Originally Listed by:  
RE/MAX Elite

<http://www.alangee.com/>



**Royal  
Le Page Noralta Spruce Grove**

#230, 70 Mcleod Ave , Spruce  
Grove, AB,

Phone: 780-920-0550  
Fax:  
[tyson@royallepage.ca](mailto:tyson@royallepage.ca)

The property information on this website is derived from the Canadian Real Estate Association's Data Distribution Facility (DDF®). DDF® references real estate listings held by various brokerage firms and franchisees. The accuracy of information is not guaranteed and should be independently verified. The trademarks REALTOR®, REALTORS® and the REALTOR® logo are controlled by The Canadian Real Estate Association (CREA) and identify real estate professionals who are members of CREA. The trademarks MLS®, Multiple Listing Service® and the associated logos are owned by CREA and identify the quality of services provided by real estate professionals who are members of CREA.