



## Edmonton Alberta

\$825,000

Welcome to the vibrant community of The Uplands! Better than new, this 2596 sqft 2-storey, w/1044 sqft LEGAL BASEMENT SUITE will surely impress! Situated on a large 5800+ sqft, fully landscaped, pie shaped lot that backs onto a greenspace. The main floor offers an open and spacious floorplan. Lavish kitchen w/premium cabinetry, quartz counters, and s.s. appliances. Gorgeous living area w/soaring 18' ceilings and linear fireplace. Open dining area, main floor bedroom, and full bath. Upstairs you will find 4 total bedrooms, including the large primary suite w/spa like 5-pc ensuite and walk-in closet. The upper level also features a bonus/loft space, additional 4-pc bath, and laundry area. The fully finished legal suite on the lower level offers a separate entrance, two bedrooms, large living/dining area, great kitchen, and laundry. Perfect for a mortgage helper! Located close to schools, parks, and other amenities. Great home in a great area! (id:6769)

Bedroom 6 3.81 m X 3.64 m

Additional bedroom 4.21 m X 3.61 m

Living room 4.88 m X 4.51 m

Dining room 4.22 m X 3.03 m

Kitchen 4.31 m X 3.91 m

Bedroom 2 3.32 m X 3.03 m

Primary Bedroom 4.25 m X 4.25 m

Bedroom 3 3.15 m X 3.49 m

Bedroom 4 3.14 m X 3.69 m

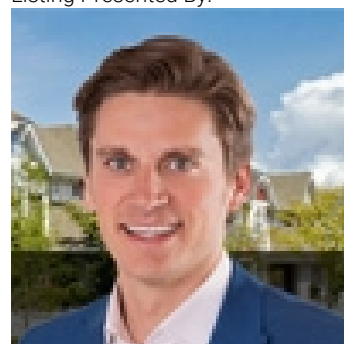
Bonus Room 4.37 m X 3.27 m

Bedroom 5 3.12 m X 3.69 m

Laundry room 0.95 m X 1.71 m

Second Kitchen 2.58 m X 2.86 m

Listing Presented By:



Originally Listed by:  
RE/MAX Elite

<http://ryanlauber.com/>



Royal

**Le Page Noralta Spruce Grove**

#230, 70 Mcleod Ave , Spruce Grove, AB,

Phone: 780-920-0550

Fax:

[tyson@royallepage.ca](mailto:tyson@royallepage.ca)

The property information on this website is derived from the Canadian Real Estate Association's Data Distribution Facility (DDF®). DDF® references real estate listings held by various brokerage firms and franchisees. The accuracy of information is not guaranteed and should be independently verified. The trademarks REALTOR®, REALTORS® and the REALTOR® logo are controlled by The Canadian Real Estate Association (CREA) and identify real estate professionals who are members of CREA. The trademarks MLS®, Multiple Listing Service® and the associated logos are owned by CREA and identify the quality of services provided by real estate professionals who are members of CREA.