



## Leduc Alberta

\$314,900

Welcome to this beautifully maintained end unit townhouse in Savanna Villas, ideally located in Alexandra Park, Leduc. Situated on a corner lot, this home offers extra privacy, additional windows, and a bright, open concept layout. The main floor features ceramic tile in the kitchen and entry, a spacious kitchen with ample cabinetry, counter space and newer appliances, a large dining area, and a sun-filled living room with a cozy corner fireplace and hardwood floors. Patio doors lead to a covered deck, perfect for relaxing or entertaining. Upstairs offers 3 generous bedrooms, including a primary retreat with a walk-in closet and a 3-piece ensuite, plus a full main bath. The fully finished basement adds even more living space with a large family room and newer carpet. Freshly updated with newer paint throughout, washer and dryer and roof. Double attached garage plus space for up to 2 additional vehicles on the driveway. Close to schools, parks, shopping, downtown, restaurants and entertainment. Must see! (id:6769)

Family room 7.06 m X 8.05 m

Living room 4.52 m X 4.9 m

Dining room 2.85 m X 3.26 m

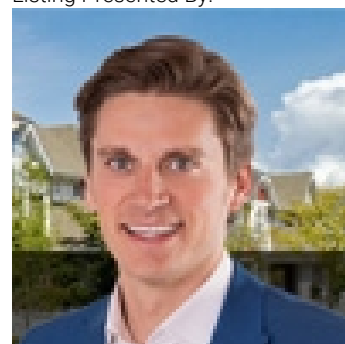
Kitchen 2.74 m X 3.45 m

Primary Bedroom 4.8 m X 3.77 m

Bedroom 2 3.67 m X 3.85 m

Bedroom 3 2.96 m X 4.44 m

Listing Presented By:



Originally Listed by:  
RE/MAX Elite

<http://www.realtyedmonton.ca/>



**Royal  
Le Page Noralta Spruce Grove**

#230, 70 Mcleod Ave , Spruce  
Grove, AB,

Phone: 780-920-0550  
Fax:  
tyson@royallepage.ca

The property information on this website is derived from the Canadian Real Estate Association's Data Distribution Facility (DDF®). DDF® references real estate listings held by various brokerage firms and franchisees. The accuracy of information is not guaranteed and should be independently verified. The trademarks REALTOR®, REALTORS® and the REALTOR® logo are controlled by The Canadian Real Estate Association (CREA) and identify real estate professionals who are members of CREA. The trademarks MLS®, Multiple Listing Service® and the associated logos are owned by CREA and identify the quality of services provided by real estate professionals who are members of CREA.