



## Edmonton Alberta

\$497,000

Opportunity Awaits in Satoo! This four-level split home, offering over 2,000 sq. ft. The upper level features a spacious primary bedroom, with a walk-in closet and a private 3-piece ensuite. Two additional generously sized bedrooms and a bright 4-piece main bath offer plenty of space for family or guests. The second level has a large, light-filled living room flows seamlessly into the dining area. The kitchen boasts abundant cabinetry and ample counter space. On the main level, you'll find a versatile bedroom/office space, a convenient 2-piece bath, laundry area, and a cozy family room featuring a charming wood-burning fireplace. Patio doors lead directly to your expansive deck and a massive, park-like backyard. The fully finished basement offers a large rec room, a bedroom, and tons of storage. Car enthusiasts and hobbyists will love the oversized double attached garage, complemented by an additional oversized single detached garage in the backyard. Plus, third parking area for a large motorhome. (id:6769)

Living room 20'2" x 14'

Dining room 7'10" x 13'

Kitchen 12'5" x 15'

Bedroom 5 3.25 m X 3.83 m

Family room 20'6" x 11'

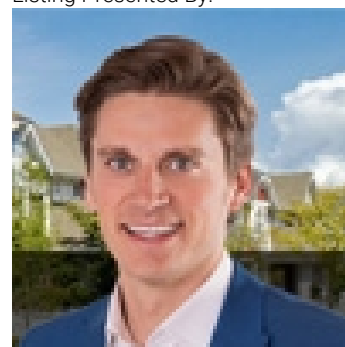
Bedroom 4 12'8" x 10'

Primary Bedroom 15'1" x 11'

Bedroom 2 10'0" x 11'

Bedroom 3 10'7" x 13'

Listing Presented By:



Originally Listed by:  
RE/MAX Elite



**Royal**

**Le Page Noralta Spruce Grove**

#230, 70 Mcleod Ave , Spruce  
Grove, AB,

Phone: 780-920-0550

Fax:

tyson@royallepage.ca

The property information on this website is derived from the Canadian Real Estate Association's Data Distribution Facility (DDF®). DDF® references real estate listings held by various brokerage firms and franchisees. The accuracy of information is not guaranteed and should be independently verified. The trademarks REALTOR®, REALTORS® and the REALTOR® logo are controlled by The Canadian Real Estate Association (CREA) and identify real estate professionals who are members of CREA. The trademarks MLS®, Multiple Listing Service® and the associated logos are owned by CREA and identify the quality of services provided by real estate professionals who are members of CREA.