



Edmonton Alberta

\$219,900

2 BED 2 FULL BATH SOUTH FACING CORNER UNIT W/ TITLED UNDERGROUND PARKING in Elements at Urban Village! This immaculate 2nd floor unit is sure to please with its open concept floor plan, granite countertops, modern cabinets, stainless steel appliances, IN-SUITE LAUNDRY, and so much more! This unit has the perfect floor plan with the bedrooms separated by the living area and south facing so it gets loads of natural light from dusk till dawn with all the extra windows! Outside also boasts a huge wrap around covered balcony! Close to all the amenities you'd need and a great location for commuting all around the city! Don't miss out on this great unit! (id:6769)

Living room Measurements not available

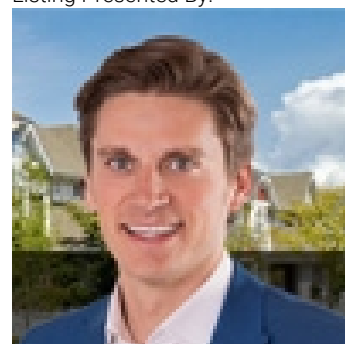
Dining room Measurements not available

Kitchen Measurements not available

Primary Bedroom Measurements not available

Bedroom 2 Measurements not available

Listing Presented By:



Originally Listed by:
MaxWell Progressive

<http://www.keithmadsengroup.com/>



Royal

Le Page Noralta Spruce Grove

#230, 70 Mcleod Ave , Spruce Grove, AB,

Phone: 780-920-0550

Fax:

tyson@royalpage.ca

The property information on this website is derived from the Canadian Real Estate Association's Data Distribution Facility (DDF®). DDF® references real estate listings held by various brokerage firms and franchisees. The accuracy of information is not guaranteed and should be independently verified. The trademarks REALTOR®, REALTORS® and the REALTOR® logo are controlled by The Canadian Real Estate Association (CREA) and identify real estate professionals who are members of CREA. The trademarks MLS®, Multiple Listing Service® and the associated logos are owned by CREA and identify the quality of services provided by real estate professionals who are members of CREA.