



Edmonton Alberta

\$249,000

This stunning 2-bedroom unit, spanning over 1,400 sq. ft., is filled with natural light thanks to large windows on both the west and east sides. The brand-new kitchen boasts modern appliances and flows seamlessly into the bright dining area and expansive living room. The primary bedroom offers a 2-piece ensuite and a walk-in closet, while the second bedroom is equally spacious. Additional conveniences include in-suite laundry, a generously sized storage room, and extra storage space. You'll also enjoy the benefit of an oversized titled underground parking stall. The building features fantastic amenities such as an exercise room, a party room, and plenty of visitor parking. Situated in a prime downtown location, this unit provides quick access to the LRT, the University of Alberta, Grant MacEwan, and the breathtaking River Valley trails. (id:6769)

Living room 4.05 m X 4.05 m

Dining room 3.56 m X 3.39 m

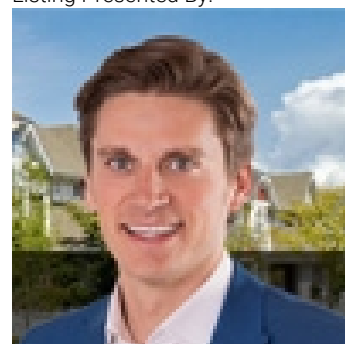
Kitchen 4.59 m X 3.56 m

Primary Bedroom 5.38 m X 4.19 m

Bedroom 2 3.94 m X 3.43 m

Storage 1.37 m X 2.25 m

Listing Presented By:



Originally Listed by:
RE/MAX Elite

<http://www.johnmattiello.com/>



CREA

DDF

#230, 70 Mcleod Ave , Spruce
Grove, AB,

Phone: 780-920-0550
tyson@royallepage.ca

The property information on this website is derived from the Canadian Real Estate Association's Data Distribution Facility (DDF®). DDF® references real estate listings held by various brokerage firms and franchisees. The accuracy of information is not guaranteed and should be independently verified. The trademarks REALTOR®, REALTORS® and the REALTOR® logo are controlled by The Canadian Real Estate Association (CREA) and identify real estate professionals who are members of CREA. The trademarks MLS®, Multiple Listing Service® and the associated logos are owned by CREA and identify the quality of services provided by real estate professionals who are members of CREA.